

Product datasheet for **TP315118L**

SEC14L3 (NM_174975) Human Recombinant Protein

Product data:

Product Type:	Recombinant Proteins
Description:	Recombinant protein of human SEC14-like 3 (<i>S. cerevisiae</i>) (SEC14L3), 1 mg
Species:	Human
Expression Host:	HEK293T
Expression cDNA Clone or AA Sequence:	>RC215118 protein sequence Red =Cloning site Green =Tags(s)
	 MSGRVGDLSPKQAETLAKFRENVQDVLPALPNPDDYFLLRWLRARNFDLQKSEALLRKYMEFRKTMIDID H ILDWQPPEVIQKYMPPGGLCGYDRDGCPVWYDIIGPLDPKGLLFSVTKQDLLKTKMRDCERILHECDLQTE RLGKKIETIVMIFDCEGLGLKHFVKPLVEVYQEFFGLLEENYPETLKFMLIVKATKLPVGYNLMKPFLS EDTRRKIIVLGNWKEGLLKLISPEELPAQFGGTLTDPDGNPKCLTKINYGGEIPKSMYVRDQVKTQYEH SVQINRGSSHQVEYEILFPGCVLRWQFSSDGADIGFGVFLKTKMGERQRAGEMTEVLP SQRYNAH MVPE D GNLTCSEAGVYVLRFDNTYSFVHAKKVSFTVEVLLPDEGMQKYDKELTPV TRTRPLEQKLISEEDLAANDILDYKDDDDKV
Tag:	C-Myc/DDK
Predicted MW:	45.9 kDa
Concentration:	>0.05 µg/µL as determined by microplate BCA method
Purity:	> 80% as determined by SDS-PAGE and Coomassie blue staining
Buffer:	25 mM Tris-HCl, 100 mM glycine, pH 7.3, 10% glycerol
Preparation:	Recombinant protein was captured through anti-DDK affinity column followed by conventional chromatography steps.
Note:	For testing in cell culture applications, please filter before use. Note that you may experience some loss of protein during the filtration process.
Storage:	Store at -80°C.
Stability:	Stable for 12 months from the date of receipt of the product under proper storage and handling conditions. Avoid repeated freeze-thaw cycles.



[View online >](#)

RefSeq: [NP_777635](#)

Locus ID: 266629

UniProt ID: [Q9UDX4](#)

RefSeq Size: 2089

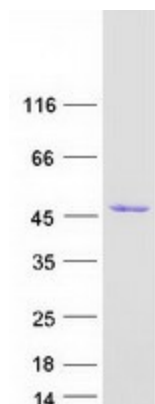
Cytogenetics: 22q12.2

RefSeq ORF: 1200

Synonyms: TAP2

Summary: The protein encoded by this gene is highly similar to the protein encoded by the *Saccharomyces cerevisiae* SEC14 gene. The SEC14 protein is a phosphatidylinositol transfer protein that is essential for biogenesis of Golgi-derived transport vesicles, and thus is required for the export of yeast secretory proteins from the Golgi complex. The specific function of this protein has not yet been determined. Alternatively spliced transcript variants encoding multiple isoforms have been observed for this gene. [provided by RefSeq, Jul 2012]

Product images:



Coomassie blue staining of purified SEC14L3 protein (Cat# [TP315118]). The protein was produced from HEK293T cells transfected with SEC14L3 cDNA clone (Cat# [RC215118]) using MegaTran 2.0 (Cat# [TT210002]).