

Product datasheet for TP315110L

UBE3C (NM_014671) Human Recombinant Protein

Product data:

| | |
|---------------------------------------|---|
| Product Type: | Recombinant Proteins |
| Description: | Recombinant protein of human ubiquitin protein ligase E3C (UBE3C), 1 mg |
| Species: | Human |
| Expression Host: | HEK293T |
| Expression cDNA Clone or AA Sequence: | >RC215110 representing NM_014671 Red=Cloning site Green=Tags(s) |

MFSFEGDFKTRPKVSLGGASRKEEKASLLHRTQEERRKREEERRRLKNAIIIIQSFIRGYRDRKQQYSIQR
SAFDRCATLSQSGGAFPIANGPNLTLVLRQLFFYKQNEDESKRLIWLQNLIKHSSLFVKQLDGERLTC
LFQIKRLMSLCCRLLQNCNDDSLNVALPMRMLLEVFSSENTYLPVLQDASYVVSIEQILHYMIHNGYYS
LYLLINSKLPSSIEYSDLSRVPIAKILLENVLKPLHFTYNSCEGARQQVFTAFTEEFLAAPTQDQIFHF
IIPALADAQTVFPYEPFLNALLIESRCSRKSGGAPWLFYFVLTGGENYLGALSEEGLLVYLRVLQTFLS
QLPVSPASASCHDSASDSEEESEEADKPSSPEDGRLSVSYITEECLKKLDTKQTNTLLNLVWRDSASEE
VFTTMASVCHTMLMVQHRMMVPKVRLLYSLAFNARFLRHLWFLISSMSTRMITGSMVPLLQVISRGSPMSF
EDSSRIPLFYLFSSLSLISHDNEFFGDPIEVVGQRQSSMMPFTLEELIMLSRCLRDAACLGIIKLA
YPETKPEVREEYITAFQSIGVTTSEMQQCIQMEQKRWIQLFKVITNLVKMLKSRDTRRNFCPPNHWLSE
QEDIKADKVTQLYVPASRHVWRFRMGRIGPLQSTLDVGLSPPLSVSEERQLAVLTELFPVVPFEERVK
IFQRLIYADKQEVQGDGPFLDGINVTIRRNIIYEDAYDKLSPENEPDLKKRIRVHLLNAHGLDEAGIDGG
GIFREFLNELLKSGFNPNQGFFKTTNEGLLYPNPAAQMLVGDSEFARHYFLGRMLGKALYENMLVELPFA
GFFLSKLLGTSADVDIHHLASLDPEVYKNLLFLKSYEDDVEELGLNFTVWNNDLGEAQVVELKFGGKDIP
VTSANRIAYIHLVADYRLNRQIRQHCLAFRQGLANVVSLEWLRMFDQQEIQVLISGAQVPISLEDLKSFT
NYSGGYSADHPVIKVFWRVVEGFTDEEKRLLKFVTSCSRPPLLGFKELYPAFCIHNGGSDLERLPTAST
CMNLLKLPFYDETLRSLKLLYIECAAGFELS

TRTRPLEQKLISEEDLAANDILDYKDDDDKV

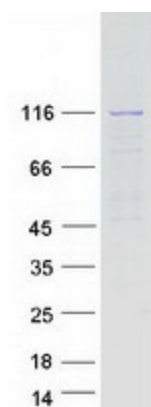
| | |
|----------------|---|
| Tag: | C-Myc/DDK |
| Predicted MW: | 123.7 kDa |
| Concentration: | >0.05 µg/µL as determined by microplate BCA method |
| Purity: | > 80% as determined by SDS-PAGE and Coomassie blue staining |
| Buffer: | 25 mM Tris-HCl, 100 mM glycine, pH 7.3, 10% glycerol |



[View online »](#)

| | |
|--------------------------|---|
| Preparation: | Recombinant protein was captured through anti-DDK affinity column followed by conventional chromatography steps. |
| Note: | For testing in cell culture applications, please filter before use. Note that you may experience some loss of protein during the filtration process. |
| Storage: | Store at -80°C. |
| Stability: | Stable for 12 months from the date of receipt of the product under proper storage and handling conditions. Avoid repeated freeze-thaw cycles. |
| RefSeq: | NP_055486 |
| Locus ID: | 9690 |
| UniProt ID: | Q15386 |
| RefSeq Size: | 5160 |
| Cytogenetics: | 7q36.3 |
| RefSeq ORF: | 3249 |
| Synonyms: | HECTH2 |
| Summary: | E3 ubiquitin-protein ligase that accepts ubiquitin from the E2 ubiquitin-conjugating enzyme UBE2D1 in the form of a thioester and then directly transfers the ubiquitin to targeted substrates. Can assemble unanchored poly-ubiquitin chains in either 'Lys-29'- or 'Lys-48'-linked polyubiquitin chains. Has preference for 'Lys-48' linkages. It can target itself for ubiquitination in vitro and may promote its own degradation in vivo.[UniProtKB/Swiss-Prot Function] |
| Protein Families: | Druggable Genome |
| Protein Pathways: | Ubiquitin mediated proteolysis |

Product images:



Coomassie blue staining of purified UBE3C protein (Cat# [TP315110]). The protein was produced from HEK293T cells transfected with UBE3C cDNA clone (Cat# [RC215110]) using MegaTran 2.0 (Cat# [TT210002]).