

Product datasheet for **TP315106**

SSBP1 (NM_003143) Human Recombinant Protein

Product data:

Product Type:	Recombinant Proteins
Description:	Recombinant protein of human single-stranded DNA binding protein 1 (SSBP1), 20 µg
Species:	Human
Expression Host:	HEK293T
Expression cDNA Clone or AA Sequence:	>RC215106 representing NM_003143 Red =Cloning site Green =Tags(s) MFRRPVLQVLRQFVRHESETTSLVRLERSLNRVHLLGRVGQDPVLRQVEGKNPVTIFSLATNEMWRSGDS EYVQLGDVSQKTTWHRISVFRPGLRDVAYQYVKKGSRIYLEGKIDYGEYMDKNNVRRQATTIADNIIFL SDQTKEKE TRTRPLEQKLISEEDLAANDILDYKDDDDKV
Tag:	C-Myc/DDK
Predicted MW:	15.1 kDa
Concentration:	>0.05 µg/µL as determined by microplate BCA method
Purity:	> 80% as determined by SDS-PAGE and Coomassie blue staining
Buffer:	25 mM Tris-HCl, 100 mM glycine, pH 7.3, 10% glycerol
Preparation:	Recombinant protein was captured through anti-DDK affinity column followed by conventional chromatography steps.
Note:	For testing in cell culture applications, please filter before use. Note that you may experience some loss of protein during the filtration process.
Storage:	Store at -80°C.
Stability:	Stable for 12 months from the date of receipt of the product under proper storage and handling conditions. Avoid repeated freeze-thaw cycles.
RefSeq:	NP_003134
Locus ID:	6742
UniProt ID:	Q04837 , A4D1U3
RefSeq Size:	628



[View online »](#)

Cytogenetics: 7q34

RefSeq ORF: 444

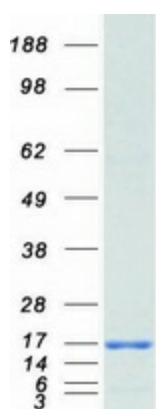
Synonyms: Mt-SSB; mtSSB; SOSS-B1; SSBP

Summary: SSBP1 is a housekeeping gene involved in mitochondrial biogenesis (Tiranti et al., 1995 [PubMed 7789991]). It is also a subunit of a single-stranded DNA (ssDNA)-binding complex involved in the maintenance of genome stability (Huang et al., 2009) [PubMed 19683501]. [supplied by OMIM, Feb 2010]

Protein Families: Druggable Genome

Protein Pathways: DNA replication, Homologous recombination, Mismatch repair

Product images:



Coomassie blue staining of purified SSBP1 protein (Cat# TP315106). The protein was produced from HEK293T cells transfected with SSBP1 cDNA clone (Cat# [RC215106]) using MegaTran 2.0 (Cat# [TT210002]).