

Product datasheet for **TP315069M**

Complement C3 (C3) (NM_000064) Human Recombinant Protein

Product data:

Product Type:	Recombinant Proteins
Description:	Recombinant protein of human complement component 3 (C3), 100 µg
Species:	Human
Expression Host:	HEK293T



[View online »](#)

Expression cDNA Clone or AA Sequence: >RC215069 representing NM_000064
Red=Cloning site Green=Tags(s)

MGPTSGPSLLLLLLTHLPLALGSPMYSIITPNILRLESEETMVLEAHDAQGDVPVTVVHDFPGKKLVLS
 SEKTVLTPATNHMGNVFTFIPANREFKSEKGRNKFVTVQATFGTQVVEKVVLSLQSGYLFIQTDKIYIT
 PGSTVLYRIFTVNHKLLPVGRVTVMVNIENPEGIPVKQDSLSSQNQLGVLPLSWDIPELVNMGQWKIRAYY
 ENSPQQVFSTEFVKEYVLPSEFVIVEPEKFFYYINEKGLEVTITARFLYGKKVEGTAFFVIFGIQDGEQ
 RISLPESLKRIPIEDGSGEVLSRKVLLDGVQNLRAEDLVGKSLYVSATVILHSGSDMVQAERSGIPIVT
 SPYQIHFTKTPKYFKPGMPFDLMVFVTNPDGSPAYRVPVAVQGEDTVQSLTQGDGVAKLSINTHPSQKPL
 SITVRTKKQELSEAEQATRMTQALPYSTVGNSNNYLHLSVLRTELRPGETLNVNFLLRMDRAHEAKIRYY
 TYLIMNKGRLLKAGRQVREPGQDLVVLPLSITTDIFPSFRLVAYYTLIGASGQREVVADSVVVDVKDSCV
 GSLVVKSGQSEDRQVPVPGQMTLKIIEGDHGARVVLVAVDKGVFVNLKKNKLTQSKIWDVVEKADIGCTPG
 SGKDYAGVFS DAGLTFTSSSGQQAQRAELQCPQPAARRRRSVQLTEKRM DKGKYPKELRKCCEDEGMRE
 NPMRFSCQRRTRFISLGEACKKFLDCCNYITELRRQHARASHLGLARSNLDEIIAEENIVSRSEFPES
 WLWNVEDLKEPPKNGISTKLMNIFLKDSITTWEILAVSMSDKKGCVADPFEVTVMQDFIDLRLPYSVV
 RNEQVEIRAVLYNYRQNQELKVRVELLHNPAFCSLATTKRRHQQTVTIPPKSSLSVPYVIVPLKTGLQEV
 EVKAAVYHHFISDGVRSKLVVPEGIRMNKTVAVRTLDPERLGGREGVQKEDIPPADLSDQVPDTESETRI
 LLQGTPVAQMTEDAVDAERLKHIVTPSGCGEQNMIGMTPTVIHVHYLDETEQWEKFGLEKRQGALELIK
 KGYTQQLAFRQPSSAFAAFVKRAPSTWLTAYVVKVFLAVNLIAIDSQVLCGAVKWLILEKQKPDGVFQE
 DAPVIHQEMIGGLRNNEKDMALTAFLVLSLQEAKDICEEQVNSLPGSITKAGDFLEANYMNLQRSYTV
 IAGYALAQMGRLLKGPLLNKFLTTAKDKNRWEDPGKQLYNVEATS YALLALLQLKDFDFVPPVWRWLNEQR
 YGGGGYGSTQATFMVFQALAQYQKDAPDHQELNLDVSLQLPSRSSKITHRIHWESASLLRSEETKENEGF
 TVTAEGKQGGLSVVTMYHAKAKDQLTCNKFDLKVTIKPAPETEKRPQDAKNTMILEICTRYRGDQDATM
 SILDISMMTGFA PD TDDLKQLANGVD RYISKYELDKAFSDRNTLIYLDK VSHSEDDCLAFKVH QYFNVE
 LIQPGAVKVYAYNLEESCTRFYHPEKEDGKLNKCRDELRCRCAEENCFIQSDDDKVTLEERLDKACEPG
 VDYVYKTRLVKVQLSND FDEYIMAIEQTIKSGSDEVQVGGQRTFISPIKCREALKLEEKHYLMWGLSSD
 FWGEKPNLSYIIGKDTWVEHWPEEDECQDEENQKQCQDLGAFTESMVFVFGCPN

TRTRPLEQKLISEEDLAANDILDYKDDDDKV

Tag: C-Myc/DDK

Predicted MW: 187 kDa

Concentration: >0.05 µg/µL as determined by microplate BCA method

Purity: > 80% as determined by SDS-PAGE and Coomassie blue staining

Buffer: 25 mM Tris-HCl, 100 mM glycine, pH 7.3, 10% glycerol

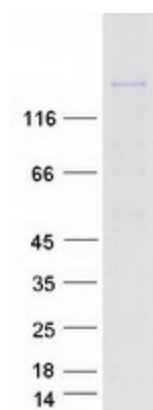
Preparation: Recombinant protein was captured through anti-DDK affinity column followed by conventional chromatography steps.

Note: For testing in cell culture applications, please filter before use. Note that you may experience some loss of protein during the filtration process.

Storage: Store at -80°C.

Stability:	Stable for 12 months from the date of receipt of the product under proper storage and handling conditions. Avoid repeated freeze-thaw cycles.
RefSeq:	NP_000055
Locus ID:	718
UniProt ID:	P01024 , V9HWA9 , B4DR57
RefSeq Size:	5067
Cytogenetics:	19p13.3
RefSeq ORF:	4989
Synonyms:	AHUS5; ARMD9; ASP; C3a; C3b; CPAMD1; HEL-S-62p
Summary:	Complement component C3 plays a central role in the activation of complement system. Its activation is required for both classical and alternative complement activation pathways. The encoded preproprotein is proteolytically processed to generate alpha and beta subunits that form the mature protein, which is then further processed to generate numerous peptide products. The C3a peptide, also known as the C3a anaphylatoxin, modulates inflammation and possesses antimicrobial activity. Mutations in this gene are associated with atypical hemolytic uremic syndrome and age-related macular degeneration in human patients. [provided by RefSeq, Nov 2015]
Protein Families:	Druggable Genome
Protein Pathways:	Complement and coagulation cascades, Systemic lupus erythematosus

Product images:



Coomassie blue staining of purified C3 protein (Cat# [TP315069]). The protein was produced from HEK293T cells transfected with C3 cDNA clone (Cat# [RC215069]) using MegaTran 2.0 (Cat# [TT210002]).