

Product datasheet for **TP315063**

SPIN3 (NM_001010862) Human Recombinant Protein

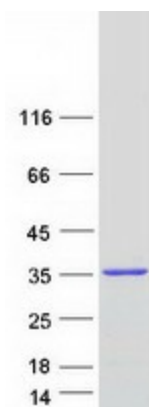
Product data:

| | |
|---------------------------------------|---|
| Product Type: | Recombinant Proteins |
| Description: | Recombinant protein of human spindlin family, member 3 (SPIN3), transcript variant 1, 20 µg |
| Species: | Human |
| Expression Host: | HEK293T |
| Expression cDNA Clone or AA Sequence: | >RC215063 representing NM_001010862 Red =Cloning site Green =Tags(s) |
| | MKTPFGKAAAGQRSRTGAGHGVSVMIKRKAHKKHRSRPTSQPRGNIVGCRIQHGWKDGDDEPLTQWKG TVLDQVPVNPSLYLIKYGDFDCVYGLELHRDERVSSLEVLPNRVASSRISDTHLAEIMVGKAVEHIFETE EGSKNEWRGMVLAQAPVMNTWFYITYEKDPVLYMYQLDDYKDGDLRILQDSNDSPLAEREPEVIDSLV GKQVEYAKDDGSKRTGMVIHQVEAKPSVYFIKDDDFHIYVYDLVKTS |
| | TRTRPLEQKLISEEDLAANDILDYKDDDDKV |
| Tag: | C-Myc/DDK |
| Predicted MW: | 29 kDa |
| Concentration: | >0.05 µg/µL as determined by microplate BCA method |
| Purity: | > 80% as determined by SDS-PAGE and Coomassie blue staining |
| Buffer: | 25 mM Tris-HCl, 100 mM glycine, pH 7.3, 10% glycerol |
| Preparation: | Recombinant protein was captured through anti-DDK affinity column followed by conventional chromatography steps. |
| Note: | For testing in cell culture applications, please filter before use. Note that you may experience some loss of protein during the filtration process. |
| Storage: | Store at -80°C. |
| Stability: | Stable for 12 months from the date of receipt of the product under proper storage and handling conditions. Avoid repeated freeze-thaw cycles. |
| RefSeq: | NP_001010862 |
| Locus ID: | 169981 |
| UniProt ID: | Q5JUX0 |



[View online >](#)

| | |
|---------------|---|
| RefSeq Size: | 4479 |
| Cytogenetics: | Xp11.21 |
| RefSeq ORF: | 774 |
| Synonyms: | bA445O16.1; SPIN-3; TDRD27 |
| Summary: | Exhibits H3K4me3-binding activity.[UniProtKB/Swiss-Prot Function] |

Product images:

Coomassie blue staining of purified SPIN3 protein (Cat# TP315063). The protein was produced from HEK293T cells transfected with SPIN3 cDNA clone (Cat# [RC215063]) using MegaTran 2.0 (Cat# [TT210002]).