

## Product datasheet for **TP315059M**

### SPAG16 (NM\_001025436) Human Recombinant Protein

#### Product data:

Product Type:	Recombinant Proteins
Description:	Recombinant protein of human sperm associated antigen 16 (SPAG16), transcript variant 2, 100 µg
Species:	Human
Expression Host:	HEK293T
Expression cDNA Clone or AA Sequence:	>RC215059 representing NM_001025436 <b>Red</b> =Cloning site <b>Green</b> =Tags(s)
	MAAQRGMPSSAVRVLEEALGMGLTAAGDARDTADAVAAEGAYYLEQVTITEASEDDYEYEEIPDDNFSIP EGEEDLAKAIQMAQEATDTEILERKTVLPSKHAVPEVIEDFLCNFLIKMGMTRTLDCFQSEWYELIQKG VTELRTVGNVPDYVTQIMLLENENKNLKKDLKHYKQAAEYVIF
	<b>TRTRPLEQKLISEEDLAANDILDYKDDDDKV</b>
Tag:	C-Myc/DDK
Predicted MW:	20.4 kDa
Concentration:	>0.05 µg/µL as determined by microplate BCA method
Purity:	> 80% as determined by SDS-PAGE and Coomassie blue staining
Buffer:	25 mM Tris-HCl, 100 mM glycine, pH 7.3, 10% glycerol
Preparation:	Recombinant protein was captured through anti-DDK affinity column followed by conventional chromatography steps.
Note:	For testing in cell culture applications, please filter before use. Note that you may experience some loss of protein during the filtration process.
Storage:	Store at -80°C.
Stability:	Stable for 12 months from the date of receipt of the product under proper storage and handling conditions. Avoid repeated freeze-thaw cycles.
RefSeq:	<a href="#">NP_001020607</a>
Locus ID:	79582
UniProt ID:	<a href="#">Q8N0X2</a> , <a href="#">Q4G1A2</a>



[View online »](#)

RefSeq Size: 1296

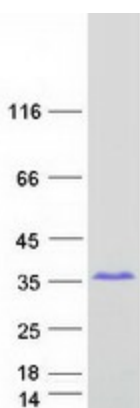
Cytogenetics: 2q34

RefSeq ORF: 549

Synonyms: PF20; WDR29

**Summary:** Cilia and flagella are comprised of a microtubular backbone, the axoneme, which is organized by the basal body and surrounded by plasma membrane. SPAG16 encodes 2 major proteins that associate with the axoneme of sperm tail and the nucleus of postmeiotic germ cells, respectively (Zhang et al., 2007 [PubMed 17699735]).[supplied by OMIM, Jul 2008]

### Product images:



Coomassie blue staining of purified SPAG16 protein (Cat# [TP315059]). The protein was produced from HEK293T cells transfected with SPAG16 cDNA clone (Cat# [RC215059]) using MegaTran 2.0 (Cat# [TT210002]).