

## Product datasheet for **TP315045M**

### CBWD6 (NM\_001085457) Human Recombinant Protein

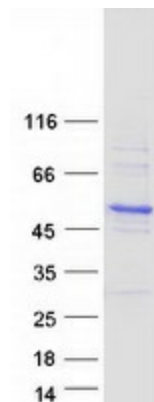
#### Product data:

Product Type:	Recombinant Proteins
Description:	Recombinant protein of human COBW domain containing 6 (CBWD6), 100 µg
Species:	Human
Expression Host:	HEK293T
Expression cDNA Clone or AA Sequence:	>RC215045 representing NM_001085457 <b>Red</b> =Cloning site <b>Green</b> =Tags(s)
	MLPAVGSVDEEEDPAEEDCPelvPIETTQSEEEKSGLGAKIPVTIITGYLGAGKTTLLNYILTEQHskR VAVILNESGEGSALEKSLAVSQGGELYEEWLELRNGCLCCSVKDNGLRAIENLMQKKGKFDDILLETGL ADPGAVASMFVWDAELGSDIYLDGIITIVDSKYGLKHLTEEKPDGLINEATRQVALADIILINKTDLVPE EDVKKLRTTLRSINGLGQILETQRSRVDLNVLDLHAFDSLGSLSQKKLQHVPGTQPHLDQSIVTITFD VPGNAKEEHLNMFQIQLLWEKNVRNKDNHCMEVIRLKGVLVSIKDKSQVIVQGVHELCDLEETPVSWKD D TERTNRLVLIGRNLDKDILKQLFIATVTETEKQWTHFKEDQVCT
	<b>TRTRPLEQKLISEEDLAANDILDYKDDDDKV</b>
Tag:	C-Myc/DDK
Predicted MW:	43.8 kDa
Concentration:	>0.05 µg/µL as determined by microplate BCA method
Purity:	> 80% as determined by SDS-PAGE and Coomassie blue staining
Buffer:	25 mM Tris-HCl, 100 mM glycine, pH 7.3, 10% glycerol
Preparation:	Recombinant protein was captured through anti-DDK affinity column followed by conventional chromatography steps.
Note:	For testing in cell culture applications, please filter before use. Note that you may experience some loss of protein during the filtration process.
Storage:	Store at -80°C.
Stability:	Stable for 12 months from the date of receipt of the product under proper storage and handling conditions. Avoid repeated freeze-thaw cycles.
RefSeq:	<u><a href="#">NP_001078926</a></u>



[View online »](#)

Locus ID: 644019  
 UniProt ID: [Q4V339](#)  
 RefSeq Size: 1719  
 Cytogenetics: 9p11.2  
 RefSeq ORF: 1185  
 Synonyms: CBWD7

**Product images:**


Coomassie blue staining of purified CBWD6 protein (Cat# [TP315045]). The protein was produced from HEK293T cells transfected with CBWD6 cDNA clone (Cat# [RC215045]) using MegaTran 2.0 (Cat# [TT210002]).