

Product datasheet for **TP315045L**

CBWD6 (NM_001085457) Human Recombinant Protein

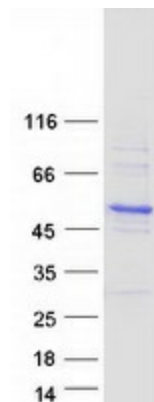
Product data:

| | |
|---------------------------------------|---|
| Product Type: | Recombinant Proteins |
| Description: | Recombinant protein of human COBW domain containing 6 (CBWD6), 1 mg |
| Species: | Human |
| Expression Host: | HEK293T |
| Expression cDNA Clone or AA Sequence: | >RC215045 representing NM_001085457 Red =Cloning site Green =Tags(s) |
| | MLPAVGSVDEEEDPAEEDCPelvPIETTQSEEEKSGLGAKIPVTIITGYLGAGKTTLLNYILTEQHskR VAVILNESGEGSALEKSLAVSQGGELYEEWLELRNGCLCCSVKDNGLRAIENLMQKKGKFDDILLETGL ADPGAVASMFVWDAELGSDIYLDGIITIVDSKYGLKHLTEEKPDGLINEATRQVALADIILINKTDLPVE EDVKKLRRTTLRSINGLGQILETQRSRVDLNVLDLHAFDSLQKQLQHPGTQPHLDQSIVTITFD VPGNAKEEHLNMFQIQLLWEKNVRNKNHCMEVIRLKGVLVSIKDKSQVIVQGVHELCDLEETPVSWKD D TERTNRLVLIGRNLDKDILKQLFIATVTETEKQWTHFKEDQVCT |
| | TRTRPLEQKLISEEDLAANDILDYKDDDDKV |
| Tag: | C-Myc/DDK |
| Predicted MW: | 43.8 kDa |
| Concentration: | >0.05 µg/µL as determined by microplate BCA method |
| Purity: | > 80% as determined by SDS-PAGE and Coomassie blue staining |
| Buffer: | 25 mM Tris-HCl, 100 mM glycine, pH 7.3, 10% glycerol |
| Preparation: | Recombinant protein was captured through anti-DDK affinity column followed by conventional chromatography steps. |
| Note: | For testing in cell culture applications, please filter before use. Note that you may experience some loss of protein during the filtration process. |
| Storage: | Store at -80°C. |
| Stability: | Stable for 12 months from the date of receipt of the product under proper storage and handling conditions. Avoid repeated freeze-thaw cycles. |
| RefSeq: | <u>NP_001078926</u> |



[View online »](#)

Locus ID: 644019
 UniProt ID: [Q4V339](#)
 RefSeq Size: 1719
 Cytogenetics: 9p11.2
 RefSeq ORF: 1185
 Synonyms: CBWD7

Product images:


Coomassie blue staining of purified CBWD6 protein (Cat# [TP315045]). The protein was produced from HEK293T cells transfected with CBWD6 cDNA clone (Cat# [RC215045]) using MegaTran 2.0 (Cat# [TT210002]).