

## Product datasheet for **TP315045**

### CBWD6 (NM\_001085457) Human Recombinant Protein

#### Product data:

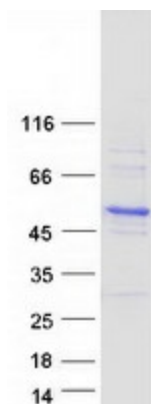
Product Type:	Recombinant Proteins
Description:	Recombinant protein of human COBW domain containing 6 (CBWD6), 20 µg
Species:	Human
Expression Host:	HEK293T
Expression cDNA Clone or AA Sequence:	>RC215045 representing NM_001085457 <b>Red</b> =Cloning site <b>Green</b> =Tags(s)
	<p>MLPAVGSVDEEEDPAEEDCPPELVPIETTQSEEEKSGLGAKIPVTIITGYLGAGKTTLLNYILTEQHSCR VAVILNESGEGSALEKSLAVSQGGELYEEWLELRNGCLCCSVKDNGLRAIENLMQKKGKFDLILLETGTL ADPGAVASMFVWDAELGSDIYLDGIITIVDSKYGLKHLTEEKPDGLINEATRQVALADIILINKTDLVPE EDVKKLRRTLSINGLGQILETQRSRVDLSNVLDLHAFDSLGSISLQKKLQHVPGTQPHLDQSIVITITFD VPGNAKEEHLNMFIQNLLWEKNVRNKDNHCMEVIRLKGVSIDKKSQQVIVQGVHELCDLEETPVSWKDD TERTNRLVLIGRNLDKDILKQLFIATVTETEKQWTHFKEDQVCT</p> <p><b>TRTRPLEQKLISEEDLAANDILDYKDDDDKV</b></p>
Tag:	C-Myc/DDK
Predicted MW:	43.8 kDa
Concentration:	>0.05 µg/µL as determined by microplate BCA method
Purity:	> 80% as determined by SDS-PAGE and Coomassie blue staining
Buffer:	25 mM Tris-HCl, 100 mM glycine, pH 7.3, 10% glycerol
Preparation:	Recombinant protein was captured through anti-DDK affinity column followed by conventional chromatography steps.
Note:	For testing in cell culture applications, please filter before use. Note that you may experience some loss of protein during the filtration process.
Storage:	Store at -80°C.
Stability:	Stable for 12 months from the date of receipt of the product under proper storage and handling conditions. Avoid repeated freeze-thaw cycles.
RefSeq:	<a href="#">NP_001078926</a>
Locus ID:	644019



[View online »](#)

UniProt ID: [Q4V339](#)  
RefSeq Size: 1719  
Cytogenetics: 9p11.2  
RefSeq ORF: 1185  
Synonyms: CBWD7

### Product images:



Coomassie blue staining of purified CBWD6 protein (Cat# TP315045). The protein was produced from HEK293T cells transfected with CBWD6 cDNA clone (Cat# [RC215045]) using MegaTran 2.0 (Cat# [TT210002]).