

Product datasheet for **TP315039**

PMPCB (NM_004279) Human Recombinant Protein

Product data:

Product Type: Recombinant Proteins
Description: Recombinant protein of human peptidase (mitochondrial processing) beta (PMPCB), nuclear gene encoding mitochondrial protein, 20 µg

Species: Human

Expression Host: HEK293T

Expression cDNA Clone or AA Sequence: >RC215039 representing NM_004279
Red=Cloning site **Green**=Tags(s)

MAAAAARVVLSSAARRRLWGFSESLIRGAAGRSLYFGENRLRSTQAATQVWLNVPETRVTCLESGLRVA
SEDSGLSTCTVGLWIDAGSRYENEKNNGTAHFLEHMAFKGTTKRSQLDLELEIENMGAHLNAYTSREQTV
YYAKAFSKDLPRAVEILADIIQNSTLGAEIERERGVLREMQEVETNLQEVVFDYLHATAYQNTALGRT
ILGPTENIKSISRKDLVDYITTHYKGRIVLAAAGGVSHDELDDLAKFHFGDSLCTHKGEIPALPPCKFT
GSEIRVRDDKMPLAHLAIAVEAVGWAHPDTICLMVANTLIGNWDRSFGGGMNLSKLAQLTCHGNLCHSF
QSFNTSYTDTGLWGLYMVCESSVADMLHVQKEWMRLCTSVTESEVARARNLLKTNMLLQLDGSTPICE
DIGRQMLCYNRRIPPELEARIDAVNAETIREVCTKYIYNRSPAIAAVGPIKQLPDFKQIRSNMCWLRLD

TRTRPLEQKLISEEDLAANDILDYKDDDDKV

Tag: C-Myc/DDK

Predicted MW: 49.4 kDa

Concentration: >0.05 µg/µL as determined by microplate BCA method

Purity: > 80% as determined by SDS-PAGE and Coomassie blue staining

Buffer: 25 mM Tris-HCl, 100 mM glycine, pH 7.3, 10% glycerol

Preparation: Recombinant protein was captured through anti-DDK affinity column followed by conventional chromatography steps.

Note: For testing in cell culture applications, please filter before use. Note that you may experience some loss of protein during the filtration process.

Storage: Store at -80°C.

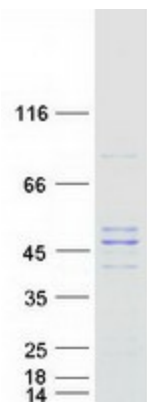
Stability: Stable for 12 months from the date of receipt of the product under proper storage and handling conditions. Avoid repeated freeze-thaw cycles.



[View online >](#)

RefSeq:	NP_004270
Locus ID:	9512
UniProt ID:	O75439 , B3KM34 , Q96CP5
RefSeq Size:	1771
Cytogenetics:	7q22.1
RefSeq ORF:	1467
Synonyms:	Beta-MPP; MAS1; MPP11; MPPB; MPPP52; P-52
Summary:	This gene is a member of the peptidase M16 family and encodes a protein with a zinc-binding motif. This protein is located in the mitochondrial matrix and catalyzes the cleavage of the leader peptides of precursor proteins newly imported into the mitochondria, though it only functions as part of a heterodimeric complex. [provided by RefSeq, Jul 2008]
Protein Families:	Druggable Genome, Protease

Product images:



Coomassie blue staining of purified PMPCB protein (Cat# TP315039). The protein was produced from HEK293T cells transfected with PMPCB cDNA clone (Cat# [RC215039]) using MegaTran 2.0 (Cat# [TT210002]).