

## Product datasheet for **TP315007L**

### INSM1 (NM\_002196) Human Recombinant Protein

#### Product data:

Product Type:	Recombinant Proteins
Description:	Recombinant protein of human insulinoma-associated 1 (INSM1), 1 mg
Species:	Human
Expression Host:	HEK293T
Expression cDNA Clone or AA Sequence:	>RC215007 representing NM_002196 <b>Red</b> =Cloning site <b>Green</b> =Tags(s)

MPRGFLVKRSKSTPVSYRVRGGEDGDRALLSPSCGGARAEPAPSPVPGPLPPPPAERAHAALAAAL  
ACAPGPQPPPQGPRAAHFGNPEAAHPALYSPTRPVSREHEKHKYFERSFNLGSPVSAESFPTPAALLGG  
GGGGGASGAGGGGTCGGDPLLFAELKMGTAFSAGAEAARGPGPGPPLPPAAALRPPGKRPPPTAAEP  
PAKAVKAPGAKKPKAIRKLHFEDEVTTSPVLGLKIKEGPVEAPRGRAGGAARPLGEFICQLCKEYADPF  
ALAQHKCSRIVRVEYRCPECAKVFSPANLASHRRWHKPRPAPAAARAPEPEAAARAEAREAPGGGSDRD  
TPSPGGVSESGSEDGLYECHHCAKKFRRQAYLRKHLLAHHQALQAKGAPLAPPAEDLLALYPGPDEKAPQ  
EAAGDGEGAGVLGLSASAECHELCPVCGESFASKGAQERHLRLLHAAQVFPCYKCPATFYSSPGLTRHINK  
CHPSENQVILLQVPVRPAC

**TRTRPLEQKLISEEDLAANDILDYKDDDDKV**

Tag:	C-Myc/DDK
Predicted MW:	52.7 kDa
Concentration:	>0.05 µg/µL as determined by microplate BCA method
Purity:	> 80% as determined by SDS-PAGE and Coomassie blue staining
Buffer:	25 mM Tris-HCl, 100 mM glycine, pH 7.3, 10% glycerol
Preparation:	Recombinant protein was captured through anti-DDK affinity column followed by conventional chromatography steps.
Note:	For testing in cell culture applications, please filter before use. Note that you may experience some loss of protein during the filtration process.
Storage:	Store at -80°C.
Stability:	Stable for 12 months from the date of receipt of the product under proper storage and handling conditions. Avoid repeated freeze-thaw cycles.



[View online »](#)

RefSeq: [NP\\_002187](#)

Locus ID: 3642

UniProt ID: [Q01101](#)

RefSeq Size: 2838

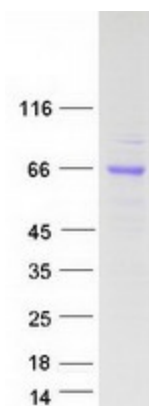
Cytogenetics: 20p11.23

RefSeq ORF: 1530

Synonyms: IA-1; IA1

**Summary:** Insulinoma-associated 1 (INSM1) gene is intronless and encodes a protein containing both a zinc finger DNA-binding domain and a putative prohormone domain. This gene is a sensitive marker for neuroendocrine differentiation of human lung tumors. [provided by RefSeq, Jul 2008]

### Product images:



Coomassie blue staining of purified INSM1 protein (Cat# [TP315007]). The protein was produced from HEK293T cells transfected with INSM1 cDNA clone (Cat# [RC215007]) using MegaTran 2.0 (Cat# [TT210002]).