

Product datasheet for **TP314997L**

IMPG1 (NM_001563) Human Recombinant Protein

Product data:

Product Type:	Recombinant Proteins
Description:	Recombinant protein of human interphotoreceptor matrix proteoglycan 1 (IMPG1), 1 mg
Species:	Human
Expression Host:	HEK293T
Expression cDNA Clone or AA Sequence:	>RC214997 protein sequence Red =Cloning site Green =Tags(s)

MYLETRRAIFVFWIFLQVQGTKDISINIYHSETKDIDNPPRNETTESTEKMYKMSTMRRIFDLAKHRTKR
SAFFPTGVKVCPCQESMKQILDLSLQAYYRLRVCQEAWEAYRIFLDRIPTDGEYQDWVSICQQETFCFLDI
GKNFSNSQEHLDLLQRIKQRSFPDRKDEISAETLGEGETIVISTDVANVSLGPFPLTPDDTLLNEIL
DNTLNDTKMPTTERETEFVLEEQRVELSVSLVNQKFAELADSQSPYYQELAGKSQQLQMOKIFKKLPGF
KKIHVLGFRPKKEKDGSSSTEMQLTAIFKRHSAAEKSPASDLLSFDSNKIESEEVYHGTMEEDKQPEIYL
TATDLKRLISKALEEEQSLDVGTIQFTDEIAGSLPAFGPDTQSELPTSAVITEDATLSPELPPVEPQLE
TVDGAEHGLPDTSWSPAMASTSLSEAPFFMASSIFSLTDQGTTDTMATDQTMLVPGTLTIPTSDYSAIS
QLALGISHPPASSDDSRSSAGGEDMVRDLDEMDLSDTPAPSEVPELSEYVSPDHFLEDTTPVSALQYIT
TSSMTIAPKGRELVFFSLRVANMAFSNDLFNKSSLEYRALEQQFTQLLVPYLRNLTGFKQLEILNFRN
GSVIVNSKMKFAKSVPYNLTKAVHGVLEDFRSAAAQQLHLEIDSYSLNIEPADQADPCKFLACGEFAQCVC
KNEWTEEAECRCCKPGYDSQGSLDGLEPGLCGPGTKECEVLQGGKAPCRLPDHSENQAYKTSVKKFQNNQQN
NKVISKRNSELLTVEYEEFNHQDWEGN

TRTRPLEQKLISEEDLAANDILDYKDDDDKV

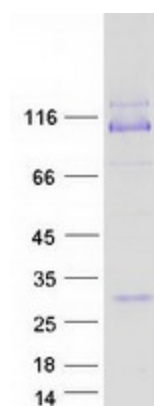
Tag:	C-Myc/DDK
Predicted MW:	89.2 kDa
Concentration:	>0.05 µg/µL as determined by microplate BCA method
Purity:	> 80% as determined by SDS-PAGE and Coomassie blue staining
Buffer:	25 mM Tris-HCl, 100 mM glycine, pH 7.3, 10% glycerol
Preparation:	Recombinant protein was captured through anti-DDK affinity column followed by conventional chromatography steps.
Note:	For testing in cell culture applications, please filter before use. Note that you may experience some loss of protein during the filtration process.



[View online »](#)

Storage:	Store at -80°C.
Stability:	Stable for 12 months from the date of receipt of the product under proper storage and handling conditions. Avoid repeated freeze-thaw cycles.
RefSeq:	NP_001554
Locus ID:	3617
UniProt ID:	Q17R60
RefSeq Size:	3576
Cytogenetics:	6q14.1
RefSeq ORF:	2391
Synonyms:	GP147; IPM150; SPACR; VMD4
Summary:	This gene encodes a protein that is a major component of the retinal interphotoreceptor matrix. The encoded protein is a proteoglycan that is thought to play a role in maintaining viability of photoreceptor cells and in adhesion of the neural retina to the retinal pigment epithelium. Alternate splicing results in multiple transcript variants. [provided by RefSeq, Sep 2013]
Protein Families:	Druggable Genome, Secreted Protein

Product images:



Coomassie blue staining of purified IMPG1 protein (Cat# [TP314997]). The protein was produced from HEK293T cells transfected with IMPG1 cDNA clone (Cat# [RC214997]) using MegaTran 2.0 (Cat# [TT210002]).