

Product datasheet for **TP314997**

IMPG1 (NM_001563) Human Recombinant Protein

Product data:

Product Type: Recombinant Proteins

Description: Recombinant protein of human interphotoreceptor matrix proteoglycan 1 (IMPG1), 20 µg

Species: Human

Expression Host: HEK293T

Expression cDNA Clone or AA Sequence: >RC214997 protein sequence
Red=Cloning site **Green**=Tags(s)

MYLETERRAIFVFWIFLQVQGTKDISINIIYHSETKDIDNPPRNETTESTEKMYSKSTMRRIFDLAKHRTKR
SAFFPTGVKVCPEQESMKQILDSLQAYYRLRVCQEAWEAYRIFLDRIPTDGEYQDWVSICQQETFCFLDI
GKNFSNSQEHLDLLQRIKQSFDPDRKDEISAETLGEPGETIVISTDVANVSLGPFPLTPDDTLLNEIL
DNTLNDTKMPTTERETFAVLEEQRVELSVSLVNQKFAELADSQSPYYQELAGKSQQLQMOKIFKKLPGF
KKIHVLGFRPKKEKDGSSSTEMQLTAIFKRHSAEAKSPASDLSFDSNKIESEEVYHGTMEEDKQPEIYL
TATDLKRLISKALEEEQSLDVGTIQFTDEIAGSLPAFGPDTQSELPTSFAVITEDATLSPELPPVEPQLE
TVDGAEHGLPDTSWSPAMASTSLSEAPFFMASSIFSLTDQGTDTMATDQTMVLVPLTIPTSDYSAIS
QLALGISHPPASSDDSRSSAGGEDMVRDLDEMDLSDTPAPSEVPELSEYVSPDHFLEDTTPVSALQYIT
TSSMTIAPKGRELVFFSLRVANMAFSNDLFNKSSLEYRALEQQFTQLLVPLYRSNLTGFKQLEILNFRN
GSVIVNSKMKFAKSVPYNLTKAVHGVLEDFRSAAQQLHLEIDSYSLNIEPADQADPCKFLACGEFAQCVC
KNEWTEEAECRCCKPGYDSQGSLDGLEPGLCGPGTKECEVLQGGKAPCRLPDHSENQAYKTSVKKFQNNQNN
NKVISKRNSELTVEYEEFNHQDWEGN

TRTRPLEQKLISEEDLAANDILDYKDDDDKV

Tag: C-Myc/DDK

Predicted MW: 89.2 kDa

Concentration: >0.05 µg/µL as determined by microplate BCA method

Purity: > 80% as determined by SDS-PAGE and Coomassie blue staining

Buffer: 25 mM Tris-HCl, 100 mM glycine, pH 7.3, 10% glycerol

Preparation: Recombinant protein was captured through anti-DDK affinity column followed by conventional chromatography steps.

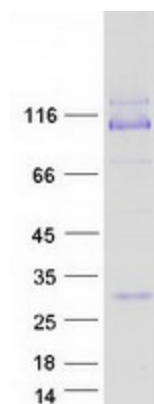
Note: For testing in cell culture applications, please filter before use. Note that you may experience some loss of protein during the filtration process.



[View online »](#)

Storage:	Store at -80°C.
Stability:	Stable for 12 months from the date of receipt of the product under proper storage and handling conditions. Avoid repeated freeze-thaw cycles.
RefSeq:	NP_001554
Locus ID:	3617
UniProt ID:	Q17R60
RefSeq Size:	3576
Cytogenetics:	6q14.1
RefSeq ORF:	2391
Synonyms:	GP147; IPM150; SPACR; VMD4
Summary:	This gene encodes a protein that is a major component of the retinal interphotoreceptor matrix. The encoded protein is a proteoglycan that is thought to play a role in maintaining viability of photoreceptor cells and in adhesion of the neural retina to the retinal pigment epithelium. Alternate splicing results in multiple transcript variants. [provided by RefSeq, Sep 2013]
Protein Families:	Druggable Genome, Secreted Protein

Product images:



Coomassie blue staining of purified IMPG1 protein (Cat# TP314997). The protein was produced from HEK293T cells transfected with IMPG1 cDNA clone (Cat# [RC214997]) using MegaTran 2.0 (Cat# [TT210002]).