

## Product datasheet for **TP314995**

### PPP1R11 (NM\_021959) Human Recombinant Protein

#### Product data:

Product Type:	Recombinant Proteins
Description:	Recombinant protein of human protein phosphatase 1, regulatory (inhibitor) subunit 11 (PPP1R11), 20 µg
Species:	Human
Expression Host:	HEK293T
Expression cDNA Clone or AA Sequence:	>RC214995 representing NM_021959 <b>Red</b> =Cloning site <b>Green</b> =Tags(s)
	 MAEAGAGLSETVTETTIVTTEPENRSLTIKLRKRKPEKKVEWTSDTVNEHMGRSSKCCCIYEKPRAF GESSTESDEEEEGCGHTHCVRGHRKRRRATLGPTPTTPPQPPDPSQPPPGPMQH  <b>TRTRPLEQKLISEEDLAANDILDYKDDDDKV</b>
Tag:	C-Myc/DDK
Predicted MW:	13.8 kDa
Concentration:	>0.05 µg/µL as determined by microplate BCA method
Purity:	> 80% as determined by SDS-PAGE and Coomassie blue staining
Buffer:	25 mM Tris-HCl, 100 mM glycine, pH 7.3, 10% glycerol
Preparation:	Recombinant protein was captured through anti-DDK affinity column followed by conventional chromatography steps.
Note:	For testing in cell culture applications, please filter before use. Note that you may experience some loss of protein during the filtration process.
Storage:	Store at -80°C.
Stability:	Stable for 12 months from the date of receipt of the product under proper storage and handling conditions. Avoid repeated freeze-thaw cycles.
RefSeq:	<a href="#">NP_068778</a>
Locus ID:	6992
UniProt ID:	<a href="#">O60927</a> , <a href="#">A2BEK1</a>
RefSeq Size:	1620



[View online »](#)

Cytogenetics: 6p22.1

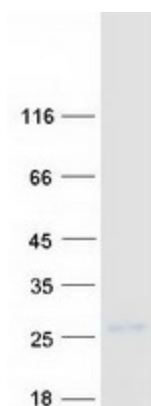
RefSeq ORF: 378

Synonyms: CFAP255; HCG-V; HCGV; IPP3; TCTE5; TCTEX5

**Summary:** This gene encodes a specific inhibitor of protein phosphatase-1 (PP1) with a differential sensitivity toward the metal-independent and metal-dependent forms of PP1. The gene is located within the major histocompatibility complex class I region on chromosome 6. [provided by RefSeq, Jul 2008]

**Protein Families:** Druggable Genome

### Product images:



Coomassie blue staining of purified PPP1R11 protein (Cat# TP314995). The protein was produced from HEK293T cells transfected with PPP1R11 cDNA clone (Cat# [RC214995]) using MegaTran 2.0 (Cat# [TT210002]).