

## Product datasheet for **TP314991L**

### CHMP1A (NM\_002768) Human Recombinant Protein

#### Product data:

Product Type:	Recombinant Proteins
Description:	Purified recombinant protein of Homo sapiens chromatin modifying protein 1A (CHMP1A), transcript variant 2, 1 mg
Species:	Human
Expression Host:	HEK293T
Expression cDNA	>RC214991 representing NM_002768
Clone or AA Sequence:	Red=Cloning site Green=Tags(s)

MDDTLFQLKFTAKQLEKLAKKAIEKDSKAEQAKVKKALLQKNVECARVYAENAIRKKNEGVNWLRMASRVD  
AVASKVQTAVTMKGVTKNMAQVTKALDKALSTMDLQKVSSVMDFEQVQVQLDVHTSVMEDSMSSATTLT  
TPQEQVDSLIMQIAEENGLVLDQLSQLPEGASAVGESSVRSQEDQLSRRLAALRN

TRTRPLEQKLISEEDLAANDILDYKDDDDKV

Tag:	C-Myc/DDK
Predicted MW:	21.5 kDa
Concentration:	>0.05 µg/µL as determined by microplate BCA method
Purity:	> 80% as determined by SDS-PAGE and Coomassie blue staining
Buffer:	25 mM Tris-HCl, 100 mM glycine, pH 7.3, 10% glycerol
Preparation:	Recombinant protein was captured through anti-DDK affinity column followed by conventional chromatography steps.
Note:	For testing in cell culture applications, please filter before use. Note that you may experience some loss of protein during the filtration process.
Storage:	Store at -80°C.
Stability:	Stable for 12 months from the date of receipt of the product under proper storage and handling conditions. Avoid repeated freeze-thaw cycles.
RefSeq:	<u><a href="#">NP_002759</a></u>
Locus ID:	5119
UniProt ID:	<u><a href="#">Q9HD42</a></u>



[View online »](#)

RefSeq Size: 2474

Cytogenetics: 16q24.3

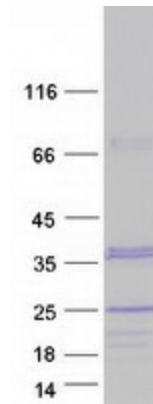
RefSeq ORF: 588

Synonyms: CHMP1; PCH8; PCOLN3; PRSM1; VPS46-1; VPS46A

**Summary:** This gene encodes a member of the CHMP/Chmp family of proteins which are involved in multivesicular body sorting of proteins to the interiors of lysosomes. The initial prediction of the protein sequence encoded by this gene suggested that the encoded protein was a metallopeptidase. The nomenclature has been updated recently to reflect the correct biological function of this encoded protein. Several transcripts encoding different isoforms have been found for this gene. [provided by RefSeq, Dec 2012]

**Protein Families:** Druggable Genome, Transcription Factors

### Product images:



Coomassie blue staining of purified CHMP1A protein (Cat# [TP314991]). The protein was produced from HEK293T cells transfected with CHMP1A cDNA clone (Cat# [RC214991]) using MegaTran 2.0 (Cat# [TT210002]).