

## Product datasheet for **TP314979L**

### **FGFR1 (NM\_023108) Human Recombinant Protein**

#### **Product data:**

<b>Product Type:</b>	Recombinant Proteins
<b>Description:</b>	Purified recombinant protein of Homo sapiens fibroblast growth factor receptor 1 (FGFR1), transcript variant 6, 1 mg
<b>Species:</b>	Human
<b>Expression Host:</b>	HEK293T
<b>Expression cDNA Clone or AA Sequence:</b>	>RC214979 representing NM_023108 <b>Red</b> =Cloning site <b>Green</b> =Tags(s)

MWSWKCLLFWAVLVLTATLCTARPSPTLPEQDALPSEDDDDDDSSSEEKETDNTKPNPVAPYWTSPEKM  
EKKLHAVPAAKTVKFKCPSSGTPNPTLRWLKNGKEFKPDHRIGGYKVRYATWSIIMDSVWPSDKGNYTCI  
VENEYGSINHTYQLDVVERSPHRPILQAGLPANKTVALGSNVEFMCKVYSDPQPHIQWLKHIEVNGSKIG  
PDNLPYVQILKVIMAPVFGVQSTGKETT VSGAQVPVGR LSCPRMGSFLTLQAHTLHLSRDLATSPRTSNR  
GHKVEVSWEQRAAGMGGAGL

**TRTRPLEQKLISEEDLAANDILDYKDDDDKV**

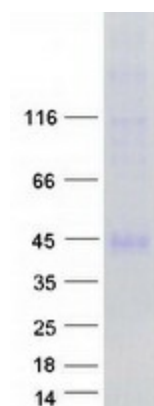
<b>Tag:</b>	C-Myc/DDK
<b>Predicted MW:</b>	30.6 kDa
<b>Concentration:</b>	>0.05 µg/µL as determined by microplate BCA method
<b>Purity:</b>	> 80% as determined by SDS-PAGE and Coomassie blue staining
<b>Buffer:</b>	25 mM Tris-HCl, 100 mM glycine, pH 7.3, 10% glycerol
<b>Preparation:</b>	Recombinant protein was captured through anti-DDK affinity column followed by conventional chromatography steps.
<b>Note:</b>	For testing in cell culture applications, please filter before use. Note that you may experience some loss of protein during the filtration process.
<b>Storage:</b>	Store at -80°C.
<b>Stability:</b>	Stable for 12 months from the date of receipt of the product under proper storage and handling conditions. Avoid repeated freeze-thaw cycles.
<b>RefSeq:</b>	<a href="#">NP_075596</a>
<b>Locus ID:</b>	2260



[View online »](#)

UniProt ID:	<a href="#">P11362</a>
RefSeq Size:	2583
Cytogenetics:	8p11.23
RefSeq ORF:	900
Synonyms:	BFGFR; CD331; CEK; FGFBR; FLG; FLJ99988; FLT2; HBGFR; KAL2; N-SAM; OGD
Summary:	<p>The protein encoded by this gene is a member of the fibroblast growth factor receptor (FGFR) family, where amino acid sequence is highly conserved between members and throughout evolution. FGFR family members differ from one another in their ligand affinities and tissue distribution. A full-length representative protein consists of an extracellular region, composed of three immunoglobulin-like domains, a single hydrophobic membrane-spanning segment and a cytoplasmic tyrosine kinase domain. The extracellular portion of the protein interacts with fibroblast growth factors, setting in motion a cascade of downstream signals, ultimately influencing mitogenesis and differentiation. This particular family member binds both acidic and basic fibroblast growth factors and is involved in limb induction. Mutations in this gene have been associated with Pfeiffer syndrome, Jackson-Weiss syndrome, Antley-Bixler syndrome, osteoglophonic dysplasia, and autosomal dominant Kallmann syndrome 2. Chromosomal aberrations involving this gene are associated with stem cell myeloproliferative disorder and stem cell leukemia lymphoma syndrome. Alternatively spliced variants which encode different protein isoforms have been described; however, not all variants have been fully characterized. [provided by RefSeq, Jul 2008]</p>
Protein Families:	Druggable Genome, Protein Kinase, Transmembrane
Protein Pathways:	Adherens junction, MAPK signaling pathway, Melanoma, Pathways in cancer, Prostate cancer, Regulation of actin cytoskeleton

### Product images:



Coomassie blue staining of purified FGFR1 protein (Cat# [TP314979]). The protein was produced from HEK293T cells transfected with FGFR1 cDNA clone (Cat# [RC214979]) using MegaTran 2.0 (Cat# [TT210002]).