

Product datasheet for **TP314978M**

KIF6 (NM_145027) Human Recombinant Protein

Product data:

Product Type:	Recombinant Proteins
Description:	Recombinant protein of human kinesin family member 6 (KIF6), 100 µg
Species:	Human
Expression Host:	HEK293T
Expression cDNA Clone or AA Sequence:	>RC214978 representing NM_145027 Red =Cloning site Green =Tags(s)

MVKQTIQIFARVKPPVRKHQQGIYSIDEDKLIPLSLEIILPRDLADGFVNNKRESYKFKFQRFIDQDANQ
ETVFENIAKPVAGSVLAGYNGTIFAYGQTGSGKTFTITGGAERYSDRGIIPRTLSYIFEQLQKDSSKIYT
THISYLEIYNECGYDLLDPRHEASSLEDLPKVILEDPDQNIHLKNLTLHQATTEEEALNLLFLGDTNRM
IAETPMNQASTRSHCIFTIHLSSKEPGSATVRHAKLHLVLDLAGSERVAKTGVGGHLLTEAKYINLSLHYL
EQVIALSEKHRSHIPYRNSMMTSVLRDSLGGNCMTTMIATLSLEKRNLDDESISTCRFAQRVALIKNEAV
LNEEINPRLVIKRLQKEIQELKDELAMVTGEQRTEALTEAELLQLEKLITSFLEDQDSDSRLEVGDAMRK
VHHCFHLLKLLNDKKILENNTVSSKQDCQEPKKEEYRKLRLDILKQRDNEINILVNMLKKEKKAQ
EALHLAGMDRREFRQSQSPFRLGNPEEQRMRLSSAPSQAQDFSILGKRSSLHKKIGMREEMSLGCQE
AFEIFKRDHADSVTIDDNKQILKQRFSEAKALGESINEARSKIGHLKEEITQRHIQQVALGISENMAVPL
MPDQQEELKRSQLEEEKRRYKTMFTRLKALKVEIEHLQLLMDKAKVKLQKEFEVWWAEATNLQVNSPAV
NSLDHTKPFQTSDSQHEWSQLLSNKSSGGWEVQDQGTGRFDVCDVNARKILPSPCPSPHSQKQSSTSTP
LEDSIPKRPVSSIPLTGDSQTDSDIIFIKARQSILQKQCLGSN

TRTRPLEQKLISEEDLAANDILDYKDDDDKV

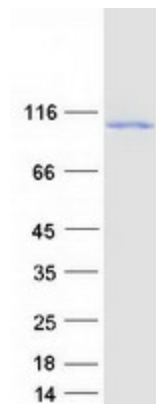
Tag:	C-Myc/DDK
Predicted MW:	92.4 kDa
Concentration:	>0.05 µg/µL as determined by microplate BCA method
Purity:	> 80% as determined by SDS-PAGE and Coomassie blue staining
Buffer:	25 mM Tris-HCl, 100 mM glycine, pH 7.3, 10% glycerol
Preparation:	Recombinant protein was captured through anti-DDK affinity column followed by conventional chromatography steps.
Note:	For testing in cell culture applications, please filter before use. Note that you may experience some loss of protein during the filtration process.



[View online »](#)

Storage:	Store at -80°C.
Stability:	Stable for 12 months from the date of receipt of the product under proper storage and handling conditions. Avoid repeated freeze-thaw cycles.
RefSeq:	NP_659464
Locus ID:	221458
UniProt ID:	Q6ZMV9
RefSeq Size:	2917
Cytogenetics:	6p21.2
RefSeq ORF:	2442
Synonyms:	C6orf102; dj137F1.4; dj188D3.1; dj1043E3.1
Summary:	This gene encodes a member of a family of molecular motors which are involved in intracellular transport of protein complexes, membrane organelles, and messenger ribonucleic acid along microtubules. Kinesins function as homodimeric molecules with two N-terminal head domains that move along microtubules and two C-terminal tail domains that interact with the transported cargo, either directly or indirectly, through adapter molecules. This gene is ubiquitously expressed in coronary arteries and other vascular tissue. A naturally occurring mutation in this gene is associated with coronary heart disease. [provided by RefSeq, May 2017]
Protein Families:	Druggable Genome

Product images:



Coomassie blue staining of purified KIF6 protein (Cat# [TP314978]). The protein was produced from HEK293T cells transfected with KIF6 cDNA clone (Cat# [RC214978]) using MegaTran 2.0 (Cat# [TT210002]).