

## Product datasheet for **TP314978L**

### **KIF6 (NM\_145027) Human Recombinant Protein**

#### **Product data:**

**Product Type:** Recombinant Proteins  
**Description:** Recombinant protein of human kinesin family member 6 (KIF6), 1 mg  
**Species:** Human  
**Expression Host:** HEK293T  
**Expression cDNA Clone or AA Sequence:** >RC214978 representing NM\_145027  
**Red**=Cloning site **Green**=Tags(s)

MVKQTIQIFARVKPPVRKHQQGIYSIDEDKLIPLSLEIILPRDLADGFVNNKRESYKFKFQRIFDQDANQ  
ETVFENIAKPVAGSVLAGYNGTIFAYGQTGSGKTFTITGGAERYSDRGIIPRTLSYIFEQLQKDSSKIYT  
THISYLEIYNECGYDLLDPRHEASSLEDLPKVILEDPDQNIHLKNLTLHQATTEEEALNLLFLGDTNRM  
IAETPMNQASTRSHCIFTIHLSSKEPGSATVRHAKLHLVLDLAGSERVAKTGVGGHLLTEAKYINLSLHYL  
EQVIIALSEKHRSHIPYRNSMMTSVLRDSLGGNCMTTMIATLSLEKRNLDDESISTCRFAQRVALIKNEAV  
LNEEINPRLVIKRLQKEIQELKDELAMVTGEQRTEALTEAELLQLEKLITSFLEDQDSDSRLEVGDAMRK  
VHHCFFHLKLLNDKKILENNTVSSKQDCQEPKKEEYRKLRLDILKQRDNEINILVNMLKKEKKAQ  
EALHLAGMDRREFRQSQSPFRLGNPEEQRMRLSSAPSQAQDFSILGKRSSLHKKIGMREEMSLGCQE  
AFEIFKRDHADSVTIDDNKQILKQRFSEAKALGESINEARSKIGHLKEEITQRHIQQVALGISENMAVPL  
MPDQQEELKRSQLEEEKRRYKTMFTRLKALKVEIEHLQLLMDKAKVKLQKEFEVWWAEATNLQVNSPAV  
NSLDHTKPFQTSDSQHEWSQLLSNKSSGGWEVQDQGTGRFDVCDVNARKILPSPCSPHSQKQSSTSTP  
LEDSIPKRPVSSIPLTGDSQTDSDIIFIKARQSILQKQCLGSN

**TRTRPLEQKLISEEDLAANDILDYKDDDDKV**

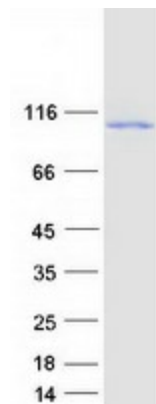
**Tag:** C-Myc/DDK  
**Predicted MW:** 92.4 kDa  
**Concentration:** >0.05 µg/µL as determined by microplate BCA method  
**Purity:** > 80% as determined by SDS-PAGE and Coomassie blue staining  
**Buffer:** 25 mM Tris-HCl, 100 mM glycine, pH 7.3, 10% glycerol  
**Preparation:** Recombinant protein was captured through anti-DDK affinity column followed by conventional chromatography steps.  
**Note:** For testing in cell culture applications, please filter before use. Note that you may experience some loss of protein during the filtration process.



[View online »](#)

Storage:	Store at -80°C.
Stability:	Stable for 12 months from the date of receipt of the product under proper storage and handling conditions. Avoid repeated freeze-thaw cycles.
RefSeq:	<a href="#">NP_659464</a>
Locus ID:	221458
UniProt ID:	<a href="#">Q6ZMV9</a>
RefSeq Size:	2917
Cytogenetics:	6p21.2
RefSeq ORF:	2442
Synonyms:	C6orf102; dj137F1.4; dj188D3.1; dj1043E3.1
Summary:	This gene encodes a member of a family of molecular motors which are involved in intracellular transport of protein complexes, membrane organelles, and messenger ribonucleic acid along microtubules. Kinesins function as homodimeric molecules with two N-terminal head domains that move along microtubules and two C-terminal tail domains that interact with the transported cargo, either directly or indirectly, through adapter molecules. This gene is ubiquitously expressed in coronary arteries and other vascular tissue. A naturally occurring mutation in this gene is associated with coronary heart disease. [provided by RefSeq, May 2017]
Protein Families:	Druggable Genome

### Product images:



Coomassie blue staining of purified KIF6 protein (Cat# [TP314978]). The protein was produced from HEK293T cells transfected with KIF6 cDNA clone (Cat# [RC214978]) using MegaTran 2.0 (Cat# [TT210002]).