

Product datasheet for **TP314976M**

EPS8 like protein 3 (EPS8L3) (NM_024526) Human Recombinant Protein

Product data:

Product Type: Recombinant Proteins
Description: Recombinant protein of human EPS8-like 3 (EPS8L3), transcript variant 3, 100 µg
Species: Human
Expression Host: HEK293T
Expression cDNA Clone or AA Sequence: >RC214976 representing NM_024526
Red=Cloning site **Green**=Tags(s)

MSRPSSRAIYLHRKEYSQNLTSEPTLLQHRVEHLMTCCKQGSQRVQGPEDALQKLFEMDAQGRVWSQDLIL
QVRDGWLQLLDIETKEELDSYRLDSIQAMNVALNTCSYNSILSITVQEPGLPGTSTLLFQCQEVGAERLK
TSLQKALEEELEQRPRLGGLQPGQDRWRGPAMERPLPMEQARYLEPGIPPEQPHQRTLEHSLPPSPRPLP
RHTSAREPSAFTLPPRRSSSPEDPERDEEVLNHLVLRDIELFMGKLEKAQAKTSRKKKFGKKNKDQGGLT
QAQYIDCFQKIKHSFNLLGRLATWLKETSAPELVHILFKSLNFILARCPEAGLAAQVISPLLLTPKAINLL
QSCLSPPESNLWMGLGPAWTTSRADWTGDEPLPYQPTFSDDWQLPEPSSQAPLGYQDPVSLRPSSPKPAQ
PALKMQVLYEFEARNPRELTVVQGEKLEVLDHSCRWWLVKNEAGRSGYIPSNILEPLQPGTGTGGQSPS
RVPMLRLSSRPPEVTDWLQAENFSTATVRTLGSLTGSQLLRIRPGELQMLCPQEAPRILSRLEAVRRMLG
ISP

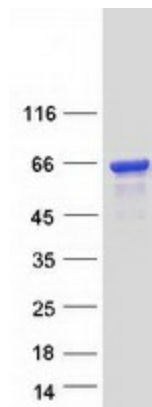
TRTRPLEQKLISEEDLAANDILDYKDDDDKV

Tag: C-Myc/DDK
Predicted MW: 63.3 kDa
Concentration: >0.05 µg/µL as determined by microplate BCA method
Purity: > 80% as determined by SDS-PAGE and Coomassie blue staining
Buffer: 25 mM Tris-HCl, 100 mM glycine, pH 7.3, 10% glycerol
Preparation: Recombinant protein was captured through anti-DDK affinity column followed by conventional chromatography steps.
Note: For testing in cell culture applications, please filter before use. Note that you may experience some loss of protein during the filtration process.
Storage: Store at -80°C.



[View online »](#)

| | |
|--------------------------|--|
| Stability: | Stable for 12 months from the date of receipt of the product under proper storage and handling conditions. Avoid repeated freeze-thaw cycles. |
| RefSeq: | NP_078802 |
| Locus ID: | 79574 |
| UniProt ID: | Q8TE67 , A8K2I6 , Q8TE67-2 |
| RefSeq Size: | 2166 |
| Cytogenetics: | 1p13.3 |
| RefSeq ORF: | 1689 |
| Synonyms: | EPS8R3; HYPT5 |
| Summary: | This gene encodes a protein that is related to epidermal growth factor receptor pathway substrate 8 (EPS8), a substrate for the epidermal growth factor receptor. The function of this protein is unknown. Alternatively spliced transcript variants encoding different isoforms exist. [provided by RefSeq, Jul 2008] |
| Protein Families: | Druggable Genome |

Product images:

Coomassie blue staining of purified EPS8L3 protein (Cat# [TP314976]). The protein was produced from HEK293T cells transfected with EPS8L3 cDNA clone (Cat# [RC214976]) using MegaTran 2.0 (Cat# [TT210002]).