

## Product datasheet for TP314976L

### EPS8 like protein 3 (EPS8L3) (NM\_024526) Human Recombinant Protein

#### Product data:

**Product Type:** Recombinant Proteins  
**Description:** Recombinant protein of human EPS8-like 3 (EPS8L3), transcript variant 3, 1 mg  
**Species:** Human  
**Expression Host:** HEK293T  
**Expression cDNA Clone or AA Sequence:** >RC214976 representing NM\_024526  
Red=Cloning site Green=Tags(s)

MSRPSSRAIYLHRKEYSQNLTSEPTLLQHRVEHLMTCQGSQRVQGPEDALQKLFEMDAQGRVWSQDLIL  
 QVRDGWLQLLDIETKEELDSYRLDSIQAMNVALNTCSYNSILSITVQEPGLPGTSTLLFQCQEVGAERLK  
 TSLQKALEEELEQRPRLGGLQPGQDRWRGPAMERPLPMEQARYLEPGIPPEQPHQRTLEHSLPPSPRPLP  
 RHTSAREPSAFTLPPRRSSSPEDPERDEEVLNHLVLRDIELFMGKLEKAQAKTSRKKKFGKKNKDQGGLT  
 QAQYIDCFQKIKHSFNLLGRLATWLKETSAPELVHILFKSLNFILARCPEAGLAAQVISPLLLTPKAINLL  
 QSCLSPPEENLWMGLGPAWTTSRADWTGDEPLPYQPTFSDDWQLPEPSSQAPLGYQDPVSLRPSSPKPAQ  
 PALKMQVLYEFEARNPRELTVVQGEKLEVLDHSCRWWLVKNEAGRSYIPSNILEPLQPGTGTGGQSPS  
 RVPMLRLSSRPEEVDWLQAENFSTATVRTLGSLTGSQLLRIRPGELQMLCPQEAPRILSRLEAVRRMLG  
 ISP

TRTRPLEQKLISEEDLAANDILDYKDDDDKV

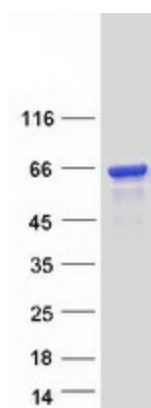
**Tag:** C-Myc/DDK  
**Predicted MW:** 63.3 kDa  
**Concentration:** >0.05 µg/µL as determined by microplate BCA method  
**Purity:** > 80% as determined by SDS-PAGE and Coomassie blue staining  
**Buffer:** 25 mM Tris-HCl, 100 mM glycine, pH 7.3, 10% glycerol  
**Preparation:** Recombinant protein was captured through anti-DDK affinity column followed by conventional chromatography steps.  
**Note:** For testing in cell culture applications, please filter before use. Note that you may experience some loss of protein during the filtration process.  
**Storage:** Store at -80°C.



[View online »](#)

<b>Stability:</b>	Stable for 12 months from the date of receipt of the product under proper storage and handling conditions. Avoid repeated freeze-thaw cycles.
<b>RefSeq:</b>	<a href="#">NP_078802</a>
<b>Locus ID:</b>	79574
<b>UniProt ID:</b>	<a href="#">Q8TE67</a> , <a href="#">A8K2I6</a> , <a href="#">Q8TE67-2</a>
<b>RefSeq Size:</b>	2166
<b>Cytogenetics:</b>	1p13.3
<b>RefSeq ORF:</b>	1689
<b>Synonyms:</b>	EPS8R3; HYPT5
<b>Summary:</b>	This gene encodes a protein that is related to epidermal growth factor receptor pathway substrate 8 (EPS8), a substrate for the epidermal growth factor receptor. The function of this protein is unknown. Alternatively spliced transcript variants encoding different isoforms exist. [provided by RefSeq, Jul 2008]
<b>Protein Families:</b>	Druggable Genome

### Product images:



Coomassie blue staining of purified EPS8L3 protein (Cat# [TP314976]). The protein was produced from HEK293T cells transfected with EPS8L3 cDNA clone (Cat# [RC214976]) using MegaTran 2.0 (Cat# [TT210002]).