

Product datasheet for TP314967L

ROR1 (NM_005012) Human Recombinant Protein

Product data:

Product Type: Recombinant Proteins

Description: Recombinant protein of human receptor tyrosine kinase-like orphan receptor 1 (ROR1), transcript variant 1, 1 mg

Species: Human

Expression Host: HEK293T

Expression cDNA Clone or AA Sequence: >RC214967 representing NM_005012
Red=Cloning site **Green**=Tags(s)

MHRPRRRGTRPPLLALLAALLLAARGAAAQETELSVSAELVPTSSWNISSELNKDSYLTLDPEMNNITTS
LGQTAELHCKVSGNPPPTIRWFKNDAPVVQEPRLSFRSTIYGSRLRIRNLDTTDTGYFQCVATNGKEVV
SSTGVLVFKVGGPPPTASPGYSDEYEEDGFCQPYRGIACARFIGNRTVYMESLHMQGEIENQITAAFTMIG
TSSHLSDKCSQFAIPSLCHYAFPYCDETSVVPKPRDLRDECEILENVLCQTEYIFARSNPMLMRLKLP
NCEDLPQPESPEAANCIRIGIPMADPINKNHKCYNSTGVDYRGTVSVTKSGRQCQPWNSQYPHTHTFTAL
RFPELNGGHSYCRNPGNQKEAPWCFTLDENFKSDLCDIPACDSKDSKEKNKMEILYLVPSVAIPLAIAL
LFFVICVCRNNQKSSAPVQRQPKHVRGQNVEMSMLNAYKPKSKAKELPLSAVRFMEELGECAFGKIYKG
HLYLPGMDHAQLVAIKTLKDYNPQQWMEFQQEASLMAELHHPNIVCLLGAVTQEQPVCMLFEYINQGDL
HEFLIMRSPHSDVGCSSDEDGTVKSSLDHGDFLHIAIQIAAGMEYLSHFFVHKDLAARNILIGEQLHVK
ISDLGLSREIYSADYYRVQSKSLLPIRWMPPEAIMYGKFSDDSDIWSFGVWLWEIFSGFLQPYGFSNQE
VIEMVRKRQLLPCSEDCPPRMYSMLMTECWNEIPSRPRFKDIHVRLRSWEGLSHTSSTTPSGGNATTQT
TSLASPVSNLSNPRYPNYMFPSQGITPQGQIAGFIGPPIPQNQRFPINGYPIPPGYAAFPAAHYQPTG
PPRVIQHCPPPKSRSPSSASGSTSTGHVTSLSGSGSNQEANIPLLPHMSIPNHPGGMGITVFGNKSQKPY
KIDSKQASLLGDANIHGHTESMISAEI

TRTRPLEQKLISEEDLAANDILDYKDDDDKV

Tag: C-Myc/DDK

Predicted MW: 104.1 kDa

Concentration: >0.05 µg/µL as determined by microplate BCA method

Purity: > 80% as determined by SDS-PAGE and Coomassie blue staining

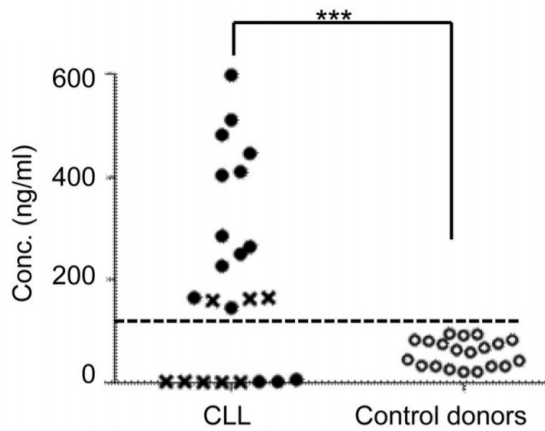
Buffer: 25 mM Tris-HCl, 100 mM glycine, pH 7.3, 10% glycerol



[View online »](#)

Bioactivity:	ELISA capture for autoantibodies (PMID: 26562161) WB positive control (PMID: 26562161) Affinity purification chromatography (PMID: 26562161)
Preparation:	Recombinant protein was captured through anti-DDK affinity column followed by conventional chromatography steps.
Note:	For testing in cell culture applications, please filter before use. Note that you may experience some loss of protein during the filtration process.
Storage:	Store at -80°C.
Stability:	Stable for 12 months from the date of receipt of the product under proper storage and handling conditions. Avoid repeated freeze-thaw cycles.
RefSeq:	NP_005003
Locus ID:	4919
UniProt ID:	Q01973
RefSeq Size:	3358
Cytogenetics:	1p31.3
RefSeq ORF:	2811
Synonyms:	dj537F10.1; NTRKR1
Summary:	This gene encodes a receptor tyrosine kinase-like orphan receptor that modulates neurite growth in the central nervous system. The encoded protein is a glycosylated type I membrane protein that belongs to the ROR subfamily of cell surface receptors. It is a pseudokinase that lacks catalytic activity and may interact with the non-canonical Wnt signalling pathway. This gene is highly expressed during early embryonic development but expressed at very low levels in adult tissues. Increased expression of this gene is associated with B-cell chronic lymphocytic leukaemia. Alternative splicing results in multiple transcript variants encoding different isoforms. [provided by RefSeq, Jun 2012]
Protein Families:	Druggable Genome, Protein Kinase, Transmembrane

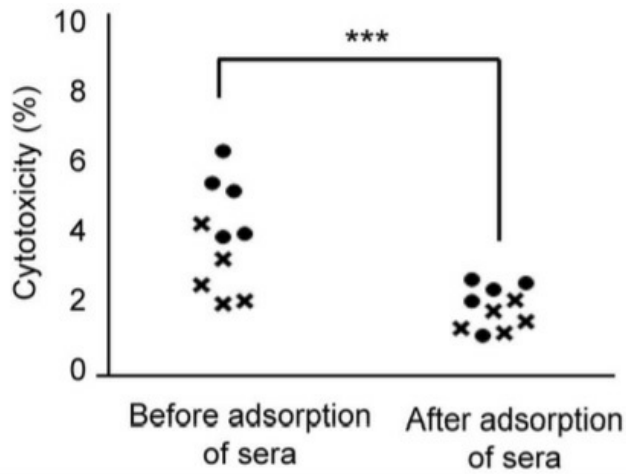
Product images:



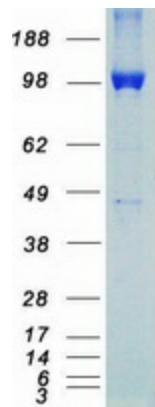
Serum concentrations (ng/ml) of anti-ROR1 autoantibodies in chronic lymphocytic leukemia (CLL) patients and controls, as measured by ELISA against the full-length ROR1 protein (OriGene [TP314967]). Solid circles: non-progressive CLL; crosses: progressive CLL; blank circles: control donors. Dotted line represents mean+2SD of controls. *** $p < 0.0001$. Figure cited from PLoS ONE, PMID: 26562161



Anti-ROR1 autoantibodies from three non-progressive (NP) and three progressive (P) chronic lymphocytic leukemia patients were analyzed in Western blot using the recombinant full-length ROR1 protein (OriGene [TP314967]). A goat anti-ROR1 antibody and an isotype control MAb served as positive and negative controls, respectively. Figure cited from PLoS ONE, PMID: 26562161



Cytotoxicity (%) of leukemic cells induced by the serum IgG fractions from five non-progressive (circles) and five progressive (crosses) chronic lymphocytic leukemia patients before and after the adsorption of sera with the recombinant full-length ROR1 protein (OriGene [TP314967]). *** $p < 0.0001$. Figure cited from PLoS ONE, PMID: 26562161



Coomassie blue staining of purified ROR1 protein (Cat# [TP314967]). The protein was produced from HEK293T cells transfected with ROR1 cDNA clone (Cat# [RC214967]) using MegaTran 2.0 (Cat# [TT210002]).