

## Product datasheet for **TP314955**

### **GOSR1 (NM\_001007024) Human Recombinant Protein**

#### Product data:

Product Type:	Recombinant Proteins
Description:	Recombinant protein of human golgi SNAP receptor complex member 1 (GOSR1), transcript variant 3, 20 µg
Species:	Human
Expression Host:	HEK293T
Expression cDNA Clone or AA Sequence:	>RC214955 representing NM_001007024 <b>Red</b> =Cloning site <b>Green</b> =Tags(s)
	 MAAGTSSYWEDLRKQARQLENELDLKLVFSKLCYSYSHSSTRDGRRDRYSSDTPLLNGSSQDRMFETM AIEIEQLLARLTGVNDKMAEYTNAGVPSLNAALMHTLQRHRDILQDYTHEFHKTKANFMAIRERENLMG SVRKDIESYKSGGVNRRTELFLKEHDHLRNSDRLIEETISIAMATKENMTSQRGMLKSIHSMNTLAN RFPVNSLIQRINLRKRRDSLILGGVIGICTILLLLYAFH  <b>TRTRPLEQKLISEEDLAANDILDYKDDDDKV</b>
Tag:	C-Myc/DDK
Predicted MW:	21 kDa
Concentration:	>0.05 µg/µL as determined by microplate BCA method
Purity:	> 80% as determined by SDS-PAGE and Coomassie blue staining
Buffer:	25 mM Tris-HCl, 100 mM glycine, pH 7.3, 10% glycerol
Preparation:	Recombinant protein was captured through anti-DDK affinity column followed by conventional chromatography steps.
Note:	For testing in cell culture applications, please filter before use. Note that you may experience some loss of protein during the filtration process.
Storage:	Store at -80°C.
Stability:	Stable for 12 months from the date of receipt of the product under proper storage and handling conditions. Avoid repeated freeze-thaw cycles.
RefSeq:	<u><a href="#">NP_001007025</a></u>
Locus ID:	9527



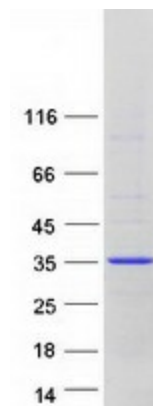
[View online »](#)

UniProt ID: [O95249](#)  
RefSeq Size: 5246  
Cytogenetics: 17q11.2  
RefSeq ORF: 750  
Synonyms: GOLIM2; GOS-28; GOS28; GOS28/P28; GS28; P28

**Summary:** This gene encodes a trafficking membrane protein which transports proteins among the endoplasmic reticulum and the Golgi and between Golgi compartments. This protein is considered an essential component of the Golgi SNAP receptor (SNARE) complex. Alternatively spliced transcript variants encoding distinct isoforms have been found for this gene. [provided by RefSeq, Jul 2008]

**Protein Families:** Druggable Genome, Transmembrane  
**Protein Pathways:** SNARE interactions in vesicular transport

### Product images:



Coomassie blue staining of purified GOSR1 protein (Cat# TP314955). The protein was produced from HEK293T cells transfected with GOSR1 cDNA clone (Cat# [RC214955]) using MegaTran 2.0 (Cat# [TT210002]).