

## Product datasheet for **TP314934L**

### UBE2E1 (NM\_182666) Human Recombinant Protein

#### Product data:

**Product Type:** Recombinant Proteins  
**Description:** Recombinant protein of human ubiquitin-conjugating enzyme E2E 1 (UBC4/5 homolog, yeast) (UBE2E1), transcript variant 2, 1 mg

**Species:** Human

**Expression Host:** HEK293T

**Expression cDNA Clone or AA Sequence:** >RC214934 representing NM\_182666  
**Red**=Cloning site **Green**=Tags(s)

MSDDDSRASTSSSSSSSNQQTEKETNTPKKKESKVSMSKNSKLLSTSAKSAGPKGDNIYEWRSILGPP  
GSVYEGGVFFLDITFTPEYFPKPPKVTFRTRIIYHCNINSQGVICLDILKDNWSPALTISKVLLSICSLLT  
DCNPADPLVGSIAQYMTNRAEHDRMARQWTKRYAT

**TRTRPLEQKLISEEDLAANDILDYKDDDDKV**

**Tag:** C-Myc/DDK

**Predicted MW:** 19.3 kDa

**Concentration:** >0.05 µg/µL as determined by microplate BCA method

**Purity:** > 80% as determined by SDS-PAGE and Coomassie blue staining

**Buffer:** 25 mM Tris-HCl, 100 mM glycine, pH 7.3, 10% glycerol

**Preparation:** Recombinant protein was captured through anti-DDK affinity column followed by conventional chromatography steps.

**Note:** For testing in cell culture applications, please filter before use. Note that you may experience some loss of protein during the filtration process.

**Storage:** Store at -80°C.

**Stability:** Stable for 12 months from the date of receipt of the product under proper storage and handling conditions. Avoid repeated freeze-thaw cycles.

**RefSeq:** [NP\\_872607](#)

**Locus ID:** 7324

**UniProt ID:** [P51965](#)



[View online »](#)

RefSeq Size: 1428

Cytogenetics: 3p24.2

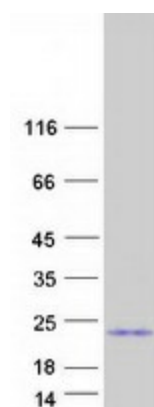
RefSeq ORF: 528

Synonyms: UBCH6

**Summary:** The modification of proteins with ubiquitin is an important cellular mechanism for targeting abnormal or short-lived proteins for degradation. Ubiquitination involves at least three classes of enzymes: ubiquitin-activating enzymes, or E1s, ubiquitin-conjugating enzymes, or E2s, and ubiquitin-protein ligases, or E3s. This gene encodes a member of the E2 ubiquitin-conjugating enzyme family. Three alternatively spliced transcript variants encoding distinct isoforms have been found for this gene. [provided by RefSeq, Jan 2011]

**Protein Pathways:** Ubiquitin mediated proteolysis

### Product images:



Coomassie blue staining of purified UBE2E1 protein (Cat# [TP314934]). The protein was produced from HEK293T cells transfected with UBE2E1 cDNA clone (Cat# [RC214934]) using MegaTran 2.0 (Cat# [TT210002]).