

Product datasheet for TP314928L

IGF1 Receptor (IGF1R) (NM_000875) Human Recombinant Protein

Product data:

Product Type:	Recombinant Proteins
Description:	Recombinant protein of human insulin-like growth factor 1 receptor (IGF1R), 1 mg
Species:	Human
Expression Host:	HEK293T
Expression cDNA	>RC214928 representing NM_000875
Clone or AA Sequence:	Red=Cloning site Green=Tags(s)

MKSGSGGGSPSTSLWGLLFLSAALSLWPTSGEICGPGIDIRNDYQQLKRENCTVIEGYLHILLISKAEDY
RSYRFPKLTVITEYLLLFRVAGLESGLDFPNLTVIRGWKLFYNYALVIFEMTNLKDIGLYNLRNITRGA
IRIEKNADLCYLSTVDWSLILDVSNNYIVGNKPPKECGDLCPGTMEEKPMCEKTTINNEYNYRCWTTNR
CQKMCPSTCGKRAC TENNECCHPECLGSCSAPDNDTACVACRHYYYAGVCVPACPPNTYRFEGWRCVDRD
FCANILSAESSDSEGFVIHDGECMQECPSGFIRNGSQSMYCIPECEGPCPKVCEEEKTKTIDSVTSAQML
QGCTIFKGNLLINIRRGNNIASELENFMGLIEVVTGYVKIRHSHALVLSFLKNLRLILGEEQLEGNYSF
YVLDNQNLQQLWDWDHRNLTIKAGKMYFAFNPKLCVSEIYRMEEVTGKGRQSKGDINTRNNGERASCES
DVLHFTSTTTSKNRIITWHRYRPPDYRDLISFTVYVYKEAPFKNVTEYDGDACGSNSWNMVDVDLPPNK
DVEPGILLHGLKPWTQYAVYVKAVTLTMVENDHIRGAKSEILYIRTNASVPSIPLDVLASANSSSQLIVK
WNPPSLPNGNLSYIVRWQRQPQDGYLYRHNYCSKDKIPIRKYADGTIDIEEVTENPKTEVCGGEKGPCC
ACPKTEAEKQAEKEEAERYKVFENFLHNSIFVPRPERKRRDVMQVANTTMSRSRNTTAADTYNITDPEE
LETEYPPFFESRVDNKERTVISNLRPFTLYRIDIHSCNHEAEKLGCSASNFFARTMPAEGADDIPGPVTV
EPRPENSIFLKWPEPENPNGLILMYEIKYGSQVEDQRECVSRQEYRKYGGAKLNRLNPGNYTARIQATSL
SGNGSWTDPVFFVYQAKTGYENFIHLIILPVAVLLIVGGLVIMLYVFHRKRNNNSRLGNGVLYASVNPEY
FSAADVYPDEWEVAREKITMSRELGGSGFMVYEGVAKGVKDEPETRVAIKTVNEAASMRERIEFLNE
ASVMKEFNCHHVRLGVSQGPPTLVMELMTRGDLKSYLRSRPEMENNPNVAPPSSKMIQMAGEIA
DGMAYLNANKFVHRDLAARNCMVAEDFTVKIGDFGMTRDIYETDYRKGKGLLPVRWMSPELKDGVFT
TYSDVWSFGVWLWEIATLAEQPYQGLSNEQVLRVMEGGLLDKPDNCPDMLFELMRMCWQYNPKMRPSFL
EIISSIKEEMEPGFREVSFYSEENKLPPEELDLEPENMESVPLDPSASSSSLPLPDRHSGHKAENGP
PGVLVLRASFDERQPYAHMNGGRKNERALPLPQSSTC

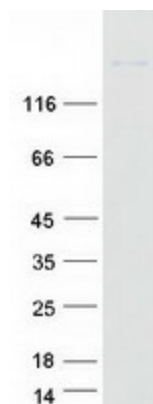
TRTRPLEQKLISEEDLAANDILDYKDDDDKV

Tag:	C-Myc/DDK
Predicted MW:	156.8 kDa



[View online »](#)

Concentration:	>0.05 µg/µL as determined by microplate BCA method
Purity:	> 80% as determined by SDS-PAGE and Coomassie blue staining
Buffer:	25 mM Tris-HCl, 100 mM glycine, pH 7.3, 10% glycerol
Preparation:	Recombinant protein was captured through anti-DDK affinity column followed by conventional chromatography steps.
Note:	For testing in cell culture applications, please filter before use. Note that you may experience some loss of protein during the filtration process.
Storage:	Store at -80°C.
Stability:	Stable for 12 months from the date of receipt of the product under proper storage and handling conditions. Avoid repeated freeze-thaw cycles.
RefSeq:	NP_000866
Locus ID:	3480
UniProt ID:	P08069
RefSeq Size:	4989
Cytogenetics:	15q26.3
RefSeq ORF:	4101
Synonyms:	CD221; IGFR; IGFR; JTK13
Summary:	This receptor binds insulin-like growth factor with a high affinity. It has tyrosine kinase activity. The insulin-like growth factor I receptor plays a critical role in transformation events. Cleavage of the precursor generates alpha and beta subunits. It is highly overexpressed in most malignant tissues where it functions as an anti-apoptotic agent by enhancing cell survival. Alternatively spliced transcript variants encoding distinct isoforms have been found for this gene. [provided by RefSeq, May 2014]
Protein Families:	Druggable Genome, Protein Kinase, Transmembrane
Protein Pathways:	Adherens junction, Colorectal cancer, Endocytosis, Focal adhesion, Glioma, Long-term depression, Melanoma, Oocyte meiosis, Pathways in cancer, Progesterone-mediated oocyte maturation, Prostate cancer

Product images:

Coomassie blue staining of purified IGF1R protein (Cat# [TP314928]). The protein was produced from HEK293T cells transfected with IGF1R cDNA clone (Cat# [RC214928]) using MegaTran 2.0 (Cat# [TT210002]).