

## Product datasheet for **TP314928**

### IGF1 Receptor (IGF1R) (NM\_000875) Human Recombinant Protein

#### Product data:

Product Type:	Recombinant Proteins
Description:	Recombinant protein of human insulin-like growth factor 1 receptor (IGF1R), 20 µg
Species:	Human
Expression Host:	HEK293T



[View online »](#)

**Expression cDNA Clone or AA Sequence:** >RC214928 representing NM\_000875  
Red=Cloning site Green=Tags(s)

MKSGSGGGSPSTSLWGLLFLSAALSLWPTSGEICGPGIDIRNDYQQLKRENTVIEGYLHILLISKAEDY  
 RSYRFPKLVITEYLLFRVAGLESGLDFPNLTVIRGWKLFYNYALVIFEMTNLKDIGLYNLRNITRGA  
 IRIEKNADLCYLSTVDWSLILDVSNYYVGNKPPKECGDLCPGTMEEEKPMCEKTTINNEYNYRCWTTNR  
 CQKMCPSTCGKRACCTENNECCHPECLGSCSAPDNDTACVACRHHYAGVCPACPPNTYRFEGWRCVDR  
 D  
 FCANILSAESSDSEGFVIHDGECMQECPSGFIRNGSQSMYCIPCEGCPKVCSEEEKTKTIDSVTSAQML  
 QGCTIFKGNLLINIRRGNNIAELENFMGLIEVVTGYVKIRHSHALVLSFLKNLRLILGEEQLEGNYSF  
 YVLDNQNQLQLWDWDHRNLTIKAGKMYFAFNPKLCVSEIYRMEEVGTGKGRQSKGDINTRNNGERASC  
 ES  
 DVLHFTSTTTSKNRIITWHRYRPPDYRDLISFTVYKKEAPFKNVTEYDGDACGSNSWNMVDVLDLPPNK  
 DVEPGILLHGLKPWTQYAVYVAVTLTMVENDHIRGAKSEILYIRTNASVPSIPLDVLASNSSSQLIVK  
 WNPPSLPNGNLSYIVRWQRQPQDGYLYRHNYCSKDKIPIRKYADGTIDIEEVTENPKTEVCGGEGKGPCC  
 ACPKTEAEKQAEKEEAERYKVFENFLHNSIFVPRPERKRRDVMQVANTTMSRSRNTTAADTYNITDPEE  
 LETEYPPFFESRVDNKERTVISNLRPFTLYRIDIHSCNHEAEKLGCSASNFFVARTMPAEGADDIPGPVTW  
 EPRPENSIFLKWPEPENPNGLILMYEIKYGSQVEDQRECVSRQYRKYGGAKLNRLNPGNYTARIQATSL  
 SGNGSWTDPVFFYVQAKTGYENFIHLIALPVAVLLIVGGLVIMLYVHFRKRNSRLGNGVLYASVNPPEY  
 FSAADVYPDEWEVAREKITMSRELGGQSGFMVYEGVAKGVKDEPETRVAIKTVNEAASMRERIEFLNE  
 ASVMKEFNCHHVRLGVSQGPPTLVIMELMTRGDLKSYLRLRPEMENNPVLPAPPSLSKMIQMAGEIA  
 DGMAYLNANKFVHRDLAARNCMVAEDFTVKIGDFGMTRDIYETDYRKGKGLLPVRWMSPELKDGVF  
 T  
 TYSDVWSFGVWLWEIATLAEQPYQGLSNEQVLRVMEGGLLDKPDNCPDMLFELMRMCWQYNPKMRP  
 SFL  
 EIISIKKEEMEPGFREVSYFYSEENKLPPEELDLEPENMESVPLDPSASSSSLPLPDRHSGHKAENGGP  
 PGVLVLRASFDERQPYAHMNGGRKNERALPLQSSTC

TRTRPLEQKLISEEDLAANDILDYKDDDDKV

**Tag:** C-Myc/DDK

**Predicted MW:** 156.8 kDa

**Concentration:** >0.05 µg/µL as determined by microplate BCA method

**Purity:** > 80% as determined by SDS-PAGE and Coomassie blue staining

**Buffer:** 25 mM Tris-HCl, 100 mM glycine, pH 7.3, 10% glycerol

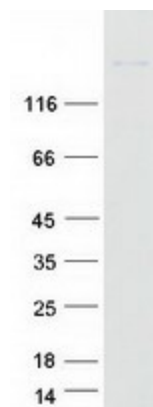
**Preparation:** Recombinant protein was captured through anti-DDK affinity column followed by conventional chromatography steps.

**Note:** For testing in cell culture applications, please filter before use. Note that you may experience some loss of protein during the filtration process.

**Storage:** Store at -80°C.

<b>Stability:</b>	Stable for 12 months from the date of receipt of the product under proper storage and handling conditions. Avoid repeated freeze-thaw cycles.
<b>RefSeq:</b>	<a href="#">NP_000866</a>
<b>Locus ID:</b>	3480
<b>UniProt ID:</b>	<a href="#">P08069</a>
<b>RefSeq Size:</b>	4989
<b>Cytogenetics:</b>	15q26.3
<b>RefSeq ORF:</b>	4101
<b>Synonyms:</b>	CD221; IGFIR; IGFR; JTK13
<b>Summary:</b>	This receptor binds insulin-like growth factor with a high affinity. It has tyrosine kinase activity. The insulin-like growth factor I receptor plays a critical role in transformation events. Cleavage of the precursor generates alpha and beta subunits. It is highly overexpressed in most malignant tissues where it functions as an anti-apoptotic agent by enhancing cell survival. Alternatively spliced transcript variants encoding distinct isoforms have been found for this gene. [provided by RefSeq, May 2014]
<b>Protein Families:</b>	Druggable Genome, Protein Kinase, Transmembrane
<b>Protein Pathways:</b>	Adherens junction, Colorectal cancer, Endocytosis, Focal adhesion, Glioma, Long-term depression, Melanoma, Oocyte meiosis, Pathways in cancer, Progesterone-mediated oocyte maturation, Prostate cancer

### Product images:



Coomassie blue staining of purified IGF1R protein (Cat# TP314928). The protein was produced from HEK293T cells transfected with IGF1R cDNA clone (Cat# [RC214928]) using MegaTran 2.0 (Cat# [TT210002]).