

Product datasheet for TP314911M

ATP2A1 (NM_173201) Human Recombinant Protein

Product data:

Product Type:	Recombinant Proteins
Description:	Recombinant protein of human ATPase, Ca ⁺⁺ transporting, cardiac muscle, fast twitch 1 (ATP2A1), transcript variant a, 100 µg
Species:	Human
Expression Host:	HEK293T
Expression cDNA Clone or AA Sequence:	>RC214911 representing NM_173201 Red=Cloning site Green=Tags(s)

MEAAHAKTTEECLAYFGVSETTGLTPDQVKRNLEKYGLNELPAEEGKTLWELVIEQFEDLLVRILLAAAC
ISFVLAWFEEGETITAFVEPFVILLILIANAIVGVWQERNAENAIEALKEYEPEMGKVYRADRKSVQRI
KARDIVPGDIVEVAVGDKVPADIRILAIKSTTLRVDQSILTGESVSVIKHTEPVPDPRAVNQDKKNMLFS
GTNIAAGKALGIVATTGVGTEIGKIRDQMAATEQDKTPLQKQKLDEFGEQLSKVISLICVAVWLNIGHFN
DPVHGGSWFRGAIYYFKIAVALAVAAIPEGLPAVITTCALGTRRMAKKNAIVRSLPSVETLGCTSVICS
DKTGTLTTNQMSVCKMFIIDKVDGDICLLNEFSITGSTYAPEGEVLKNDKPVRPGQYDGLVELATICALC
NDSSLDNFNEAKGVYEKVGAEATETALTTLVEKMNVFNTDVRSLSKVERANACNSVIRQLMKKEFTLEFSRD
RKSMSVYCSPAKSSRAAVGNKMFVKGAPEGVDRCNVYRVGTTRVPLTGPVKEKIMAVIKEWGTGRDTLR
CLALATRDTPPKREEMVLDD SARFLEYETDLTFVGVGMLDPPRKEVTGSIQLCRDAGIRVIMITGDNKG
TAIAICRRIGIFGENEEVADRAYTGREFDDLPLAEQREACRRACCFARVEPSHKS KIVEYLQSYDEITAM
TGDGVNDAPALKKAEIGIAMGSGTAVAKTASEMVLADDNFSTIVA AVEEGRAIYNNMKQFIRYLISNVG
EVCIFLTAALGLPEALIPVQLLWVNLVTDGLPATALGFNPPDLDIMDRPPRSPKEPLISGWLFFRYMAI
GGYVGAATVGAAAWFLYAEDGPHVNYSQLTHFMQCTEDNTHFEGIDCEVFEAPEPMTMALSVLVTIEMC
NALNSLSENQSLLRMPPWVNIWLLGSICLSMSLHFLILYVDPLPMIFKLRALDLTQWLMVLKISLPVIGL
DEILKFVARNYLEDPEDERRK

TRTRPLEQKLISEEDLAANDILDYKDDDDKV

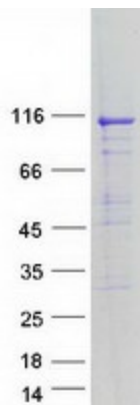
Tag:	C-Myc/DDK
Predicted MW:	110.1 kDa
Concentration:	>0.05 µg/µL as determined by microplate BCA method
Purity:	> 80% as determined by SDS-PAGE and Coomassie blue staining
Buffer:	25 mM Tris-HCl, 100 mM glycine, pH 7.3, 10% glycerol



[View online »](#)

Preparation:	Recombinant protein was captured through anti-DDK affinity column followed by conventional chromatography steps.
Note:	For testing in cell culture applications, please filter before use. Note that you may experience some loss of protein during the filtration process.
Storage:	Store at -80°C.
Stability:	Stable for 12 months from the date of receipt of the product under proper storage and handling conditions. Avoid repeated freeze-thaw cycles.
RefSeq:	NP_775293
Locus ID:	487
UniProt ID:	O14983 , Q7Z675
RefSeq Size:	3528
Cytogenetics:	16p11.2
RefSeq ORF:	3003
Synonyms:	ATP2A; SERCA1
Summary:	This gene encodes one of the SERCA Ca ²⁺ -ATPases, which are intracellular pumps located in the sarcoplasmic or endoplasmic reticula of muscle cells. This enzyme catalyzes the hydrolysis of ATP coupled with the translocation of calcium from the cytosol to the sarcoplasmic reticulum lumen, and is involved in muscular excitation and contraction. Mutations in this gene cause some autosomal recessive forms of Brody disease, characterized by increasing impairment of muscular relaxation during exercise. Alternative splicing results in three transcript variants encoding different isoforms. [provided by RefSeq, Oct 2013]
Protein Families:	Druggable Genome, Transmembrane
Protein Pathways:	Alzheimer's disease, Calcium signaling pathway

Product images:



Coomassie blue staining of purified ATP2A1 protein (Cat# [TP314911]). The protein was produced from HEK293T cells transfected with ATP2A1 cDNA clone (Cat# [RC214911]) using MegaTran 2.0 (Cat# [TT210002]).