

## Product datasheet for TP314911L

### ATP2A1 (NM\_173201) Human Recombinant Protein

#### Product data:

**Product Type:** Recombinant Proteins

**Description:** Recombinant protein of human ATPase, Ca<sup>++</sup> transporting, cardiac muscle, fast twitch 1 (ATP2A1), transcript variant a, 1 mg

**Species:** Human

**Expression Host:** HEK293T

**Expression cDNA Clone or AA Sequence:** >RC214911 representing NM\_173201  
Red=Cloning site Green=Tags(s)

MEAAHAKTTEECLAYFGVSETTGLTPDQVKRNLEKYGLNELPAEEGKTLWELVIEQFEDLLVRILLAAC  
ISFVLAWFEEGETITAFVEPFVILLILIANAIVGVWQERNAENAIEALKEYEPEMGKVYRADRKSVQRI  
KARDIVPGDIVEVAVGDKVPADIRILAIKSTTLRVDQSILTGESVSVIKHTEPVPDPRAVNQDKKNMLFS  
GTNIAAGKALGIVATTGVGTEIGKIRDQMAATEQDKTPLQKLEDFEGEQLSKVISLICVAVWLNIGHFN  
DPVHGGSWFRGAIYYFKIAVALAVAAIPEGLPAVITTCALGTRRMAKKNAIVRSLPSVETLGCTSVICS  
DKTGTLTTNQMSVCKMFIIDKVDGDICLLNEFSITGSTYAPEGEVLKNDKPVRPGQYDGLVELATICALC  
NDSSLDNFNEAKGVYEKVGAEATETALTTLVEKMNVFNTDVRSLSKVERANACNSVIRQLMKKEFTLEFSRD  
RKSMSVYCSPAASSRAAVGNKMFVKGAPEGVDRCNVYRVGTTRVPLTGPVKEKIMAVIKEWGTGRDTLR  
CLALATRDTPPKREEMVLDDARSFLEYETDLTFVGVGMLDPPRKEVTGSIQLCRDAGIRVIMITGDNKG  
TAIAICRRIGIFGENEEVADRAYTGREFDDLPLAEQREACRRACCFARVEPSHKS KIVEYLQSYDEITAM  
TGDGVNDAPALKKAEIGIAMGSGTAVAKTASEMVLADDNFSTIVA AVEEGRAIYNNMKQFIRYLISNVG  
EVCIFLTAALGLPEALIPVQLLWVNLVTDGLPATALGFNPPDLDIMDRPPRSPKEPLISGWLFFRYMAI  
GGYVGAATVGAAAWWFLYAEDGPHVNYSQLTHFMQCTEDNTHFEGIDCEVFEAPEPMTMALSVLVTIEMC  
NALNSLSENQSLLRMPWVNIWLLGSICLSMSLHFLILYVDPLPMIFKLRALDLTQWLMVLKISLPVIGL  
DEILKFVARNYLEDPEDERRK

TRTRPLEQKLISEEDLAANDILDYKDDDDKV

**Tag:** C-Myc/DDK

**Predicted MW:** 110.1 kDa

**Concentration:** >0.05 µg/µL as determined by microplate BCA method

**Purity:** > 80% as determined by SDS-PAGE and Coomassie blue staining

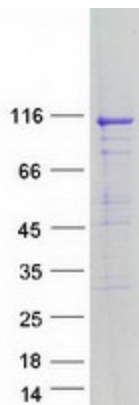
**Buffer:** 25 mM Tris-HCl, 100 mM glycine, pH 7.3, 10% glycerol



[View online »](#)

<b>Preparation:</b>	Recombinant protein was captured through anti-DDK affinity column followed by conventional chromatography steps.
<b>Note:</b>	For testing in cell culture applications, please filter before use. Note that you may experience some loss of protein during the filtration process.
<b>Storage:</b>	Store at -80°C.
<b>Stability:</b>	Stable for 12 months from the date of receipt of the product under proper storage and handling conditions. Avoid repeated freeze-thaw cycles.
<b>RefSeq:</b>	<a href="#">NP_775293</a>
<b>Locus ID:</b>	487
<b>UniProt ID:</b>	<a href="#">O14983</a> , <a href="#">Q7Z675</a>
<b>RefSeq Size:</b>	3528
<b>Cytogenetics:</b>	16p11.2
<b>RefSeq ORF:</b>	3003
<b>Synonyms:</b>	ATP2A; SERCA1
<b>Summary:</b>	This gene encodes one of the SERCA Ca(2+)-ATPases, which are intracellular pumps located in the sarcoplasmic or endoplasmic reticula of muscle cells. This enzyme catalyzes the hydrolysis of ATP coupled with the translocation of calcium from the cytosol to the sarcoplasmic reticulum lumen, and is involved in muscular excitation and contraction. Mutations in this gene cause some autosomal recessive forms of Brody disease, characterized by increasing impairment of muscular relaxation during exercise. Alternative splicing results in three transcript variants encoding different isoforms. [provided by RefSeq, Oct 2013]
<b>Protein Families:</b>	Druggable Genome, Transmembrane
<b>Protein Pathways:</b>	Alzheimer's disease, Calcium signaling pathway

### Product images:



Coomassie blue staining of purified ATP2A1 protein (Cat# [TP314911]). The protein was produced from HEK293T cells transfected with ATP2A1 cDNA clone (Cat# [RC214911]) using MegaTran 2.0 (Cat# [TT210002]).