

## Product datasheet for **TP314911**

### ATP2A1 (NM\_173201) Human Recombinant Protein

#### Product data:

Product Type:	Recombinant Proteins
Description:	Recombinant protein of human ATPase, Ca <sup>++</sup> transporting, cardiac muscle, fast twitch 1 (ATP2A1), transcript variant a, 20 µg
Species:	Human
Expression Host:	HEK293T
Expression cDNA Clone or AA Sequence:	>RC214911 representing NM_173201 <b>Red</b> =Cloning site <b>Green</b> =Tags(s)

MEAAHAKTTEECLAYFGVSETTGLTPDQVKRNLEKYGLNELPAEEGKTLWELVIEQFEDLLVRILLAAAC  
ISFVLAWFEEGETITAFVEPFVILLILIANAIVGVWQERNAENAIEALKEYEPEMGKVYRADRKSVQRI  
KARDIVPGDIVEVAVGDKVPADIRILAIKSTTLRVDQSILTGESVSVIKHTEPVPDPRAVNQDKKNMLFS  
GTNIAAGKALGIVATTGVGTEIGKIRDQMAATEQDKTPLQKQLDEFGEQLSKVISLICVAVWLNIGHFN  
DPVHGGSWFRGAIYYFKIAVALAVAAIPEGLPAVITTCALGTRRMAKKNAIVRSLPSVETLGCTSVICS  
DKTGTLTTNQMSVCKMFIIDKVDGDICLLNEFSITGSTYAPEGEVLKNDKPVRPGQYDGLVELATICALC  
NDSSLDNFNEAKGVYEKVGATETALTTLVEKMNVFNTDVRSLSKVERANACNSVIRQLMKKEFTLEFSRD  
RKSMSVYCSPAASSRAAVGNKMFVKGAPEGVDRCNVYRVGTTTRVPLTGPVKEKIMAVIKEWGTGRDTRL  
CLALATRDTPPKREEMVLDDARSFLEYETDLTFVGVGMLDPPRKEVTGSIQLCRDAGIRVIMITGDNKG  
TAIAICRRIGIFGENEEVADRAYTGREFDDLPLAEQREACRRACCFARVEPSHKS KIVEYLQSYDEITAM  
TGDGVNDAPALKKAEIGIAMGSGTAVAKTASEMVLADDNFSTIVA AVEEGRAIYNNMKQFIRYLISNVG  
EVCIFLTAALGLPEALIPVQLLWVNLVTDGLPATALGFNPPDLDIMDRPPRSPKEPLISGWLFFRYMAI  
GGYVGAATVGAAAWWFLYAEDGPHVNYSQLTHFMQCTEDNTHFEGIDCEVFEAPEPMTMALSVLVTIEMC  
NALNSLSENQSLLRMPWVNIWLLGSICLSMSLHFLILYVDPLPMIFKLRALDLTQWLMVLKISLPVIGL  
DEILKFVARNYLEDPEDERRK

**TRTRPLEQKLISEEDLAANDILDYKDDDDKV**

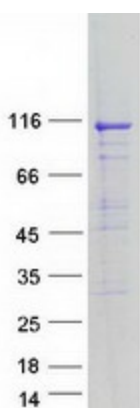
Tag:	C-Myc/DDK
Predicted MW:	110.1 kDa
Concentration:	>0.05 µg/µL as determined by microplate BCA method
Purity:	> 80% as determined by SDS-PAGE and Coomassie blue staining
Buffer:	25 mM Tris-HCl, 100 mM glycine, pH 7.3, 10% glycerol



[View online »](#)

<b>Preparation:</b>	Recombinant protein was captured through anti-DDK affinity column followed by conventional chromatography steps.
<b>Note:</b>	For testing in cell culture applications, please filter before use. Note that you may experience some loss of protein during the filtration process.
<b>Storage:</b>	Store at -80°C.
<b>Stability:</b>	Stable for 12 months from the date of receipt of the product under proper storage and handling conditions. Avoid repeated freeze-thaw cycles.
<b>RefSeq:</b>	<a href="#">NP_775293</a>
<b>Locus ID:</b>	487
<b>UniProt ID:</b>	<a href="#">O14983</a> , <a href="#">Q7Z675</a>
<b>RefSeq Size:</b>	3528
<b>Cytogenetics:</b>	16p11.2
<b>RefSeq ORF:</b>	3003
<b>Synonyms:</b>	ATP2A; SERCA1
<b>Summary:</b>	This gene encodes one of the SERCA Ca <sup>2+</sup> -ATPases, which are intracellular pumps located in the sarcoplasmic or endoplasmic reticula of muscle cells. This enzyme catalyzes the hydrolysis of ATP coupled with the translocation of calcium from the cytosol to the sarcoplasmic reticulum lumen, and is involved in muscular excitation and contraction. Mutations in this gene cause some autosomal recessive forms of Brody disease, characterized by increasing impairment of muscular relaxation during exercise. Alternative splicing results in three transcript variants encoding different isoforms. [provided by RefSeq, Oct 2013]
<b>Protein Families:</b>	Druggable Genome, Transmembrane
<b>Protein Pathways:</b>	Alzheimer's disease, Calcium signaling pathway

### Product images:



Coomassie blue staining of purified ATP2A1 protein (Cat# TP314911). The protein was produced from HEK293T cells transfected with ATP2A1 cDNA clone (Cat# [RC214911]) using MegaTran 2.0 (Cat# [TT210002]).