

## Product datasheet for **TP314880L**

### **LHFPL2 (NM\_005779) Human Recombinant Protein**

#### **Product data:**

**Product Type:** Recombinant Proteins

**Description:** Recombinant protein of human lipoma HMGIC fusion partner-like 2 (LHFPL2), 1 mg

**Species:** Human

**Expression Host:** HEK293T

**Expression cDNA Clone or AA Sequence:** >RC214880 representing NM\_005779

**Red**=Cloning site **Green**=Tags(s)

MCHVIVTCRSMWLWTLISIVVAFELIAFMSADWLIGKARSRRGGVEPAGPGGGSPPEPYHPTLGIYARCIRN  
PGVQHFQRDTLCGPYAESFGEIASGFQWQATAIFLAVGIFILCMVALVSVFTMCVQSIMKKSIFNVCGLLQ  
GIAGLFLILGLILYPAGWGCQKAIDYCGHYASAYKPGDCSLGWAFYTAIGGTVLTFICAVFSAQAEIATS  
SDKVQEEIEEGKNLICLL

**TR**TRPLEQKLISEEDLAANDILDYKDDDDKV

**Tag:** C-Myc/DDK

**Predicted MW:** 24.3 kDa

**Concentration:** >0.05 µg/µL as determined by microplate BCA method

**Purity:** > 80% as determined by SDS-PAGE and Coomassie blue staining

**Buffer:** 25 mM Tris-HCl, 100 mM glycine, pH 7.3, 10% glycerol

**Preparation:** Recombinant protein was captured through anti-DDK affinity column followed by conventional chromatography steps.

**Note:** For testing in cell culture applications, please filter before use. Note that you may experience some loss of protein during the filtration process.

**Storage:** Store at -80°C.

**Stability:** Stable for 12 months from the date of receipt of the product under proper storage and handling conditions. Avoid repeated freeze-thaw cycles.

**RefSeq:** NP\_005770

**Locus ID:** 10184

**UniProt ID:** Q6ZUX7



[View online »](#)

RefSeq Size: 4448

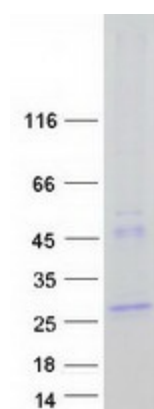
Cytogenetics: 5q14.1

RefSeq ORF: 684

**Summary:** This gene is a member of the lipoma HMGIC fusion partner (LHFP) gene family, which is a subset of the superfamily of tetraspan transmembrane protein encoding genes. Mutations in one LHFP-like gene result in deafness in humans and mice, and a second LHFP-like gene is fused to a high-mobility group gene in a translocation-associated lipoma. Alternatively spliced transcript variants have been found, but their biological validity has not been determined. [provided by RefSeq, Jul 2008]

**Protein Families:** Transmembrane

### Product images:



Coomassie blue staining of purified LHFPL2 protein (Cat# [TP314880]). The protein was produced from HEK293T cells transfected with LHFPL2 cDNA clone (Cat# [RC214880]) using MegaTran 2.0 (Cat# [TT210002]).