

Product datasheet for **TP314880**

LHFPL2 (NM_005779) Human Recombinant Protein

Product data:

Product Type:	Recombinant Proteins
Description:	Recombinant protein of human lipoma HMGIC fusion partner-like 2 (LHFPL2), 20 µg
Species:	Human
Expression Host:	HEK293T
Expression cDNA Clone or AA Sequence:	>RC214880 representing NM_005779 Red =Cloning site Green =Tags(s)
	<p>MCHVIVTCRSMWLWLLSIVWAFELIAFMSADWLIGKARSRGGVEPAGPGGGSPPEYHPTLGIYARCIRN PGVQHFQRDTLCGPYAESFGEIASGFQATAIFLAVGIFILCMVALVSVFTMCVQSIMKKSIFNVCGLLQ GIAGLFLILGLILYPAGWGCQKAIDYCGHYASAYKPGDCSLGWAFYTAIGGTVLTFCAVFSAQAEIATS SDKVQEEIEEGKNLICLL</p> <p>TRTRPLEQKLISEEDLAANDILDYKDDDDKV</p>
Tag:	C-Myc/DDK
Predicted MW:	24.3 kDa
Concentration:	>0.05 µg/µL as determined by microplate BCA method
Purity:	> 80% as determined by SDS-PAGE and Coomassie blue staining
Buffer:	25 mM Tris-HCl, 100 mM glycine, pH 7.3, 10% glycerol
Preparation:	Recombinant protein was captured through anti-DDK affinity column followed by conventional chromatography steps.
Note:	For testing in cell culture applications, please filter before use. Note that you may experience some loss of protein during the filtration process.
Storage:	Store at -80°C.
Stability:	Stable for 12 months from the date of receipt of the product under proper storage and handling conditions. Avoid repeated freeze-thaw cycles.
RefSeq:	NP_005770
Locus ID:	10184
UniProt ID:	Q6ZUX7 , A0A024RAM8



[View online »](#)

RefSeq Size: 4448

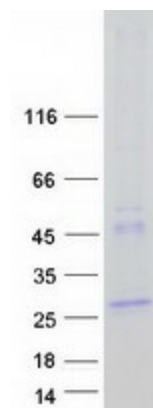
Cytogenetics: 5q14.1

RefSeq ORF: 684

Summary: This gene is a member of the lipoma HMGIC fusion partner (LHFP) gene family, which is a subset of the superfamily of tetraspan transmembrane protein encoding genes. Mutations in one LHFP-like gene result in deafness in humans and mice, and a second LHFP-like gene is fused to a high-mobility group gene in a translocation-associated lipoma. Alternatively spliced transcript variants have been found, but their biological validity has not been determined. [provided by RefSeq, Jul 2008]

Protein Families: Transmembrane

Product images:



Coomassie blue staining of purified LHFPL2 protein (Cat# TP314880). The protein was produced from HEK293T cells transfected with LHFPL2 cDNA clone (Cat# [RC214880]) using MegaTran 2.0 (Cat# [TT210002]).