

## Product datasheet for **TP314877L**

### EGFR (NM\_201283) Human Recombinant Protein

#### Product data:

Product Type:	Recombinant Proteins
Description:	Recombinant protein of human epidermal growth factor receptor (erythroblastic leukemia viral (v-erb-b) oncogene homolog, avian) (EGFR), transcript variant 3, 1 mg
Species:	Human
Expression Host:	HEK293T
Expression cDNA Clone or AA Sequence:	>RC214877 representing NM_201283 <b>Red</b> =Cloning site <b>Green</b> =Tags(s)

MRPSGTAGAALLALLAALCPASRALEEKVKVCGTSTNKLTLGTFEDHFLSLQRMFNCEVVLGNLEITYV  
QRNYDLSFLKTIQEVAGYVLIALNTVERIPLNQLIIRGNMYYENSYALAVLSNYDANKTGLKELPMRNL  
QEILHGAVRFSNNPALCNVESIQWRDIVSSDFLSNMSMDFQNHGSCQKCDPSCPNGSCWGAGEENCQKL  
TKIICAQQCSGRCRGKSPSDCCHNQCAAGCTGPRESCLVCRKFRDEATCKDTCPLMLYNPTTYQMDVN  
PEGKYSFGATCVKKCPRNYVTDHGSCVRACGADSYEMEEDGVRKCKKCEGPCRKVCNGIGIGEFKDSLS  
INATNIKHFKNCTSSISGDLHILPVAFRGDSFHTHTPLDPQELDILKTVKEITGLS

**TRTRPLEQKLISEEDLAANDILDYKDDDDKV**

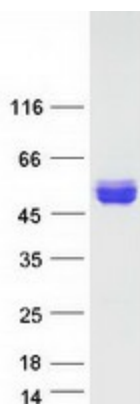
Tag:	C-Myc/DDK
Predicted MW:	42.4 kDa
Concentration:	>0.05 µg/µL as determined by microplate BCA method
Purity:	> 80% as determined by SDS-PAGE and Coomassie blue staining
Buffer:	25 mM Tris-HCl, 100 mM glycine, pH 7.3, 10% glycerol
Preparation:	Recombinant protein was captured through anti-DDK affinity column followed by conventional chromatography steps.
Note:	For testing in cell culture applications, please filter before use. Note that you may experience some loss of protein during the filtration process.
Storage:	Store at -80°C.
Stability:	Stable for 12 months from the date of receipt of the product under proper storage and handling conditions. Avoid repeated freeze-thaw cycles.
RefSeq:	<a href="#">NP_958440</a>



[View online »](#)

Locus ID:	1956
UniProt ID:	<a href="#">P00533</a>
RefSeq Size:	1595
Cytogenetics:	7p11.2
RefSeq ORF:	1215
Synonyms:	ERBB; ERBB1; ERBB; HER1; mENA; NISBD2; PIG61
Summary:	The protein encoded by this gene is a transmembrane glycoprotein that is a member of the protein kinase superfamily. This protein is a receptor for members of the epidermal growth factor family. EGFR is a cell surface protein that binds to epidermal growth factor, thus inducing receptor dimerization and tyrosine autophosphorylation leading to cell proliferation. Mutations in this gene are associated with lung cancer. EGFR is a component of the cytokine storm which contributes to a severe form of Coronavirus Disease 2019 (COVID-19) resulting from infection with severe acute respiratory syndrome coronavirus-2 (SARS-CoV-2). [provided by RefSeq, Jul 2020]
Protein Families:	Adult stem cells, Cancer stem cells, Druggable Genome, ES Cell Differentiation/IPS, Protein Kinase, Secreted Protein, Stem cell relevant signaling - JAK/STAT signaling pathway, Transmembrane
Protein Pathways:	Adherens junction, Bladder cancer, Calcium signaling pathway, Colorectal cancer, Cytokine-cytokine receptor interaction, Dorso-ventral axis formation, Endocytosis, Endometrial cancer, Epithelial cell signaling in Helicobacter pylori infection, ErbB signaling pathway, Focal adhesion, Gap junction, Glioma, GnRH signaling pathway, MAPK signaling pathway, Melanoma, Non-small cell lung cancer, Pancreatic cancer, Pathways in cancer, Prostate cancer, Regulation of actin cytoskeleton

### Product images:



Coomassie blue staining of purified EGFR protein (Cat# [TP314877]). The protein was produced from HEK293T cells transfected with EGFR cDNA clone (Cat# [RC214877]) using MegaTran 2.0 (Cat# [TT210002]).