

Product datasheet for **TP314867L**

Cadherin like 26 (CDH26) (NM_177980) Human Recombinant Protein

Product data:

Product Type:	Recombinant Proteins
Description:	Recombinant protein of human cadherin-like 26 (CDH26), transcript variant a, 1 mg
Species:	Human
Expression Host:	HEK293T
Expression cDNA Clone or AA Sequence:	>RC214867 representing NM_177980 Red =Cloning site Green =Tags(s)

MAMRSGRHPSLLLLLVLLWLLQVSIIDSVQQETDDLTKQTKEDIYQPLRRSKRRWITTLELEEDPGP
FPKLIGELFNNMSYNMSLMYLSGPGVDEYPEIGLFSLEDHENGRIYVHRPVDREMTSFTVYFDVVERS
TGKIVDTSLIFNIRISDVNDHAPQFPEKEFNITVQENQSAGQPIFQMLAVDLDEENTPNSQVLYFLISQT
PLLKESGFRVDRLSGEIRLSGCLDYETAPQFTLLIRARDCEPSLSSTTTVHVDVQEGNNHRPAFTQENY
KVQIPEGRASQGVLRLLVQDRDSPFTSAWRAKFNILHGNEEGHFDISTDPETNEGILNVIKPLDYETRPA
QSLIIVVENEERLVFCERGLQPPRKAASATVSVQVTDANDPPAFHPQSFIVNKEEGARPGTLLGTFNA
MDPDSQIRYELVHDPANWVSVDKNSGVITVEPIDRESPHVNNFSFYVIIIHAVDDGFPQTATGTLMLFL
SDINDNVPTLRPSRYMEVCESAVHEPLHIEADPDLEPFSDFTELDNTWGNAEDTWKLGRNWGQSV
E
LLTLRSLPRGNLYVPLFIGDKQGLSQKQTVHVRICPCASGLTCVELADAEVGLHVGALFPVCAAFVALAV
ALLFLLRCYFVLEPKRHGCSVSNDEGHQTLVMYNAESKGTSAQTWSDVEGQRPALLICTAAAGPTQGKVD
LEEVPSSAASQSAQARCALGSWGYGKPFEPERSVKNIHSTPAYPDATMHRQLLAPVEGRMAETLNQKLHV
A
NVLEDDPGYLPHVYSEEGECGGAPSLSSLASLEQELQPDLLDSLGSKATPFEEIYSESGVPS

TRTRPLEQKLISEEDLAANDILDYKDDDDKV

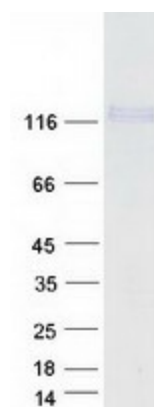
Tag:	C-Myc/DDK
Predicted MW:	92.2 kDa
Concentration:	>0.05 µg/µL as determined by microplate BCA method
Purity:	> 80% as determined by SDS-PAGE and Coomassie blue staining
Buffer:	25 mM Tris-HCl, 100 mM glycine, pH 7.3, 10% glycerol
Preparation:	Recombinant protein was captured through anti-DDK affinity column followed by conventional chromatography steps.



[View online »](#)

Note:	For testing in cell culture applications, please filter before use. Note that you may experience some loss of protein during the filtration process.
Storage:	Store at -80°C.
Stability:	Stable for 12 months from the date of receipt of the product under proper storage and handling conditions. Avoid repeated freeze-thaw cycles.
RefSeq:	NP_817089
Locus ID:	60437
UniProt ID:	Q8IXH8
RefSeq Size:	3192
Cytogenetics:	20q13.33
RefSeq ORF:	2496
Synonyms:	VR20
Summary:	This gene encodes a member of the cadherin protein family. Cadherins are a family of calcium-dependent adhesion molecules that mediate cell-cell adhesion in all solid tissues and modulate a wide variety of processes, including cell polarization, migration and differentiation. Cadherin domains occur as repeats in the extracellular region and are thought to contribute to the sorting of heterogeneous cell types and the maintenance of orderly structures such as epithelium. This protein is expressed in gastrointestinal epithelial cells and may be upregulated during allergic inflammation. This protein interacts with alpha integrins and may also be involved in leukocyte migration and adhesion. [provided by RefSeq, Jan 2017]
Protein Families:	Transmembrane

Product images:



Coomassie blue staining of purified CDH26 protein (Cat# [TP314867]). The protein was produced from HEK293T cells transfected with CDH26 cDNA clone (Cat# [RC214867]) using MegaTran 2.0 (Cat# [TT210002]).