

Product datasheet for **TP314856**

TBX20 (NM_020417) Human Recombinant Protein

Product data:

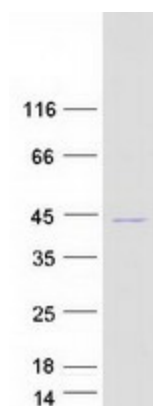
| | |
|---------------------------------------|---|
| Product Type: | Recombinant Proteins |
| Description: | Recombinant protein of human T-box 20 (TBX20), transcript variant 2 |
| Species: | Human |
| Expression Host: | HEK293T |
| Expression cDNA Clone or AA Sequence: | >RC214856 representing NM_020417 Red =Cloning site Green =Tags(s) |
| | MEFTASPKPQLSSRANAFSIAALMSSGGGSKEKEATENTIKPLEQFVEKSSCAQPLGELTS LDAHGFEFGG SGSSPSSSLCTEPLIPTTPIIPSEEMAKIACSLETKELWDKFHELGTEMIITKSGRRMFPTIRVSFSGV DPEAKYIVLMDIVPVDNKRYRYAYHRSSWL VAGKADPPLPARLYVHPDSPFTGEQLLKQMVSEFKVCLTN NELDQHGHIILNSMHKYQPRVHIIKKKDH TASLLNLKSEEFRTFIFPETVFTA VTA YQNQLITKLKIDSN PFAKGRDSSRLTDIER TRTRPLEQKLISEEDLAANDILDYKDDDDKV |
| Tag: | C-Myc/DDK |
| Predicted MW: | 33 kDa |
| Concentration: | >0.05 µg/µL as determined by microplate BCA method |
| Purity: | > 80% as determined by SDS-PAGE and Coomassie blue staining |
| Buffer: | 25 mM Tris-HCl, 100 mM glycine, pH 7.3, 10% glycerol |
| Preparation: | Recombinant protein was captured through anti-DDK affinity column followed by conventional chromatography steps. |
| Note: | For testing in cell culture applications, please filter before use. Note that you may experience some loss of protein during the filtration process. |
| Storage: | Store at -80°C. |
| Stability: | Stable for 12 months from the date of receipt of the product under proper storage and handling conditions. Avoid repeated freeze-thaw cycles. |
| RefSeq: | <u>NP_065150</u> |
| Locus ID: | 57057 |



[View online »](#)

| | |
|-------------------|---|
| UniProt ID: | Q9UMR3 |
| RefSeq Size: | 905 |
| Cytogenetics: | 7p14.2 |
| RefSeq ORF: | 894 |
| Synonyms: | 9430010M06Rik; AL022859; ASD4; T-box 20; Tbx12 |
| Summary: | This gene encodes a T-box family member. The T-box family members share a common DNA binding domain, termed the T-box, and they are transcription factors involved in the regulation of developmental processes. This gene is essential for heart development. Mutations in this gene are associated with diverse cardiac pathologies, including defects in septation, valvulogenesis and cardiomyopathy. Alternatively spliced transcript variants encoding different isoforms have been found for this gene. [provided by RefSeq, Oct 2009] |
| Protein Families: | Transcription Factors |

Product images:



Coomassie blue staining of purified TBX20 protein (Cat# TP314856). The protein was produced from HEK293T cells transfected with TBX20 cDNA clone (Cat# [RC214856]) using MegaTran 2.0 (Cat# [TT210002]).