

Product datasheet for **TP314839M**

XPO6 (NM_015171) Human Recombinant Protein

Product data:

Product Type:	Recombinant Proteins
Description:	Recombinant protein of human exportin 6 (XPO6), 100 µg
Species:	Human
Expression Host:	HEK293T
Expression cDNA Clone or AA Sequence:	>RC214839 protein sequence Red =Cloning site Green =Tags(s)

MASEEASLRALESMTTEFFHDCTTNERKREIEELLNNFAQQIGAWRFCLYFLSSTRNDYVMMYSLTVFEN
LINKMWLGVPSSQDKMEIRSCLPKLLLAHHKTLPYFIRNKLCVIVDIGRQDWPMFYHDFFTNILQLIQSP
VTTPLGLIMLKTSEELACPREDLSVARKEELRKLDDQVQTVLGLLTGILETVWDKHSVTAATPPPSPT
SGESGDLLSNLLQSPSSAKLLNQPIILDVESEYICSLALECLAHLFSWIPLSASITPSLLTTIFHFARF
GCDIRARKMASVNGSSQNCVSGQERGLGVLAMSCINELMSKNCVPMEFEEYLLRMFQQTFYLLQKITKD
NNAHTVKSRLLEELDESYIEKFTDFLRLFVSVHLRRIESYSQFPVVEFLTLLFKYTFHQPTHEGYFSCLDI
WTLFLDYLTSKIKSRLGDKEAVLNRYEDALVLLLTEVLNRIQFRYNQAQLEELDDDELDDDDQQTTEWQRYL
RQSLEVVAKVMELLPTHAFSTLFPVLQDNLEVYLGLQQFIVTSGSGHRLNITAENDCRRHLHCSLRDLSSL
LQAVGRLAEYFIGDVFAARFNDALTVVERLVKVTLYGSQIKLYNIETAVPSVLKPDLDIVHAQSLAALQA
YSHWLAQYCSEVHRQNTQQFVTLISTMDAITPLISTKVQDKLLLSACHLLVSLATTVRPVFLISIPAVQ
KVFNRTDASALRLVDKAQVLVCRALSNIPLPWPNLPENEQQWPVRSINHASLISALSRDYRNLKPSAV
APQRKMPLDDTKLIHQTLVLEDIVENISGESTKSRQICYQSLQESVQVSLALFPAFIHQSDVTDEMLS
FFLTLFRGLRVQMGVPFTEQIIQTFLNMFTRERLAESILHEGSTGCRVVEKFLKILQVWVQEPGQVFKPF
LPSIILCMEQVYPIIAERPSPDVKAELFELLFRTLHHNWRYFFKSTVLASVQRGIAEEQ MENEPQFSAI
MQAFGQSFLQPDHILFKQNLFYLETNLTKQKLYHKKIFRTAMLFQFVNVLLQVLVHKSHDLLQEEIGIAI
YNMASVDFDGFFAAFLPEFLTSCDGV DANQKSVLGRNFKMDRDLPSFTQNVHRLVNDLRYRLCNDLSP
GTVKL

TRTRPLEQKLISEEDLAANDILDYKDDDDKV

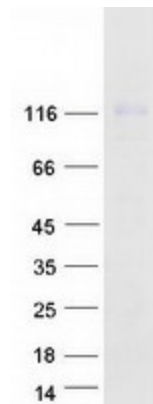
Tag:	C-Myc/DDK
Predicted MW:	128.7 kDa
Concentration:	>0.05 µg/µL as determined by microplate BCA method
Purity:	> 80% as determined by SDS-PAGE and Coomassie blue staining
Buffer:	25 mM Tris-HCl, 100 mM glycine, pH 7.3, 10% glycerol



[View online >](#)

Preparation:	Recombinant protein was captured through anti-DDK affinity column followed by conventional chromatography steps.
Note:	For testing in cell culture applications, please filter before use. Note that you may experience some loss of protein during the filtration process.
Storage:	Store at -80°C.
Stability:	Stable for 12 months from the date of receipt of the product under proper storage and handling conditions. Avoid repeated freeze-thaw cycles.
RefSeq:	NP_055986
Locus ID:	23214
UniProt ID:	Q96QU8
RefSeq Size:	4504
Cytogenetics:	16p12.1
RefSeq ORF:	3375
Synonyms:	EXP6; RANBP20
Summary:	The protein encoded by this gene is a member of the importin-beta family. Members of this family are regulated by the GTPase Ran to mediate transport of cargo across the nuclear envelope. This protein has been shown to mediate nuclear export of profilin-actin complexes. A pseudogene of this gene is located on the long arm of chromosome 14. Alternative splicing results in multiple transcript variants that encode different protein isoforms. [provided by RefSeq, Aug 2012]

Product images:



Coomassie blue staining of purified XPO6 protein (Cat# [TP314839]). The protein was produced from HEK293T cells transfected with XPO6 cDNA clone (Cat# [RC214839]) using MegaTran 2.0 (Cat# [TT210002]).