

## Product datasheet for TP314839L

### XPO6 (NM\_015171) Human Recombinant Protein

#### Product data:

Product Type:	Recombinant Proteins
Description:	Recombinant protein of human exportin 6 (XPO6), 1 mg
Species:	Human
Expression Host:	HEK293T
Expression cDNA Clone or AA Sequence:	>RC214839 protein sequence Red=Cloning site Green=Tags(s)

MASEEASLRALESMTTEFFHDCTTNERKREIEELLNNFAQQIGAWRFCLYFLSSTRNDYVMMYSLTVFEN  
LINKMWLGVP SQDKMEIRSCLPKLLLAHHKTLPYFIRNKLCVIVDIGRQDWPMFYHDFFTNILQLIQSP  
VTTPLGLIMLKTSEELACPREDLSVARKEELRLLLLDQVQTVLGLLTGILETVWDKHSVTAATPPPSPT  
SGESGDLLSNLLQSPSSAKLLNQPIILDVESEYICSLALECLAHLFSWIPLSASITPSLLTTIFHFARF  
GCDIRARKMASVNGSSQNCVSGQERGLGVLAMSCINELMSKNCVPMEFEEYLLRMFQQTFYLLQKITKD  
NNAHTVKSRL EELDESYIEKFTDFLRLFVSVHLRRIESYSQFPVVEFLTLLFKYTFHQPTHEGYFSCLDI  
WTLFLDYLT SKIKSRLGDKEAVLNRYEDALVLLLTEVLNRIQFRYNQAQLEELDDDELDDDQQT EWQRYL  
RQSLEVVAKVMELLPTHAFSTLFPVLQDNLEVYLGLQQFIVTSGSGHRLNITAENDCRRHLHCSLRDLSSL  
LQAVGR LAEYFIGDVFAARFNDALTVVERLVKVTLYGSQIKLYNIETAVPSVLKPDLDIVHAQSLAALQA  
YSHWLAQYCSEVHRQNTQQFVTLISTMDAITPLISTKVQDKLLLSACHLLVSLATTVRPVFLISIPAVQ  
KVFNRTDASALRLVDKAQVLVCRALSNI LLLPWPNL PENEQQWPVRSINHASLISALSRDYRNLPKPSAV  
APQRKMPLDDTKLIHQTL SVLEDIVENISGESTKSRQICYQSLQESVQVSLALFPAFIHQSDVTDEMLS  
FFLTLFRGLRVQMGPVFTEQIIQTFLNMF TREQLAESILHEGSTGCRVVEKFLKILQVWVQEPGQVFKPF  
LPSIILCMEQVYPIIAERPSPDVKAELFELLFRTLHHNWRYFFKSTVLASVQRGIAEEQ MENEPQFSAI  
MQAFGQSFLQPDHILFKQNL FYLET LNTKQKLYHKKIFRTAMLFQFVNVLLQVLVHKSHDLLQEEIGIAI  
YNMASVDFDGFFAAFLPEFLTSCDGV DANQKSVLGRNFKMDRDLPSFTQNVHRLVNDLRYRLCNDSLPP  
GTVKL

TRTRPLEQKLISEEDLAANDILDYKDDDDKV

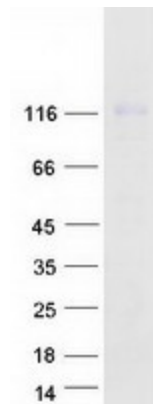
Tag:	C-Myc/DDK
Predicted MW:	128.7 kDa
Concentration:	>0.05 µg/µL as determined by microplate BCA method
Purity:	> 80% as determined by SDS-PAGE and Coomassie blue staining
Buffer:	25 mM Tris-HCl, 100 mM glycine, pH 7.3, 10% glycerol



[View online »](#)

<b>Preparation:</b>	Recombinant protein was captured through anti-DDK affinity column followed by conventional chromatography steps.
<b>Note:</b>	For testing in cell culture applications, please filter before use. Note that you may experience some loss of protein during the filtration process.
<b>Storage:</b>	Store at -80°C.
<b>Stability:</b>	Stable for 12 months from the date of receipt of the product under proper storage and handling conditions. Avoid repeated freeze-thaw cycles.
<b>RefSeq:</b>	<a href="#">NP_055986</a>
<b>Locus ID:</b>	23214
<b>UniProt ID:</b>	<a href="#">Q96QU8</a>
<b>RefSeq Size:</b>	4504
<b>Cytogenetics:</b>	16p12.1
<b>RefSeq ORF:</b>	3375
<b>Synonyms:</b>	EXP6; RANBP20
<b>Summary:</b>	The protein encoded by this gene is a member of the importin-beta family. Members of this family are regulated by the GTPase Ran to mediate transport of cargo across the nuclear envelope. This protein has been shown to mediate nuclear export of profilin-actin complexes. A pseudogene of this gene is located on the long arm of chromosome 14. Alternative splicing results in multiple transcript variants that encode different protein isoforms. [provided by RefSeq, Aug 2012]

### Product images:



Coomassie blue staining of purified XPO6 protein (Cat# [TP314839]). The protein was produced from HEK293T cells transfected with XPO6 cDNA clone (Cat# [RC214839]) using MegaTran 2.0 (Cat# [TT210002]).