

Product datasheet for **TP314837L**

PGPEP1 (NM_017712) Human Recombinant Protein

Product data:

Product Type: Recombinant Proteins

Description: Recombinant protein of human pyroglutamyl-peptidase I (PGPEP1), 1 mg

Species: Human

Expression Host: HEK293T

Expression cDNA Clone or AA Sequence: >RC214837 representing NM_017712

Red=Cloning site **Green**=Tags(s)

MEQPRKAVVVTGFGPFGEHTVNASWIAVQELEKLGSDVLDLHVYEIPVEYQTVQRLIPALWEKHSPQLV
VHVGVS GMATTVTLEKCGHNKGYKGLDNCRCFCPSQCCVEDGPESIDSIIDMDAVCKRVTTGLDVSVTI
SQDAGRYLCDFTYYTSLYQSHGRSAFVHVPPLGKPYNADQLGRALRAIIEMLDLLEQSEGKINYCHKH

TRTRPLEQKLISEEDLAANDILDYKDDDDKV

Tag: C-Myc/DDK

Predicted MW: 23 kDa

Concentration: >0.05 µg/µL as determined by microplate BCA method

Purity: > 80% as determined by SDS-PAGE and Coomassie blue staining

Buffer: 25 mM Tris-HCl, 100 mM glycine, pH 7.3, 10% glycerol

Preparation: Recombinant protein was captured through anti-DDK affinity column followed by conventional chromatography steps.

Note: For testing in cell culture applications, please filter before use. Note that you may experience some loss of protein during the filtration process.

Storage: Store at -80°C.

Stability: Stable for 12 months from the date of receipt of the product under proper storage and handling conditions. Avoid repeated freeze-thaw cycles.

RefSeq: [NP_060182](#)

Locus ID: 54858

UniProt ID: [Q9NXJ5](#)

RefSeq Size: 2239



[View online »](#)

Cytogenetics: 19p13.11

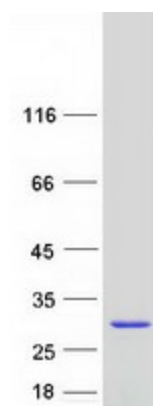
RefSeq ORF: 627

Synonyms: PAP-I; Pcp; PGI; PGP; PGP-I; PGPI

Summary: The gene encodes a cysteine protease and member of the peptidase C15 family of proteins. The encoded protein cleaves amino terminal pyroglutamate residues from protein substrates including thyrotropin-releasing hormone and other neuropeptides. Expression of this gene may be downregulated in colorectal cancer, while activity of the encoded protein may be negatively correlated with cancer progression in colorectal cancer patients. Activity of the encoded protease may also be altered in other disease states including in liver cirrhosis, which is associated with reduced protease activity, and in necrozoospermia, which is associated with elevated protease activity. [provided by RefSeq, Jul 2016]

Protein Families: Druggable Genome, Protease

Product images:



Coomassie blue staining of purified PGPEP1 protein (Cat# [TP314837]). The protein was produced from HEK293T cells transfected with PGPEP1 cDNA clone (Cat# [RC214837]) using MegaTran 2.0 (Cat# [TT210002]).