

Product datasheet for TP314790M

MAML1 (NM_014757) Human Recombinant Protein

Product data:

Product Type: Recombinant Proteins
Description: Purified recombinant protein of Homo sapiens mastermind-like 1 (Drosophila) (MAML1), 100 µg
Species: Human
Expression Host: HEK293T
Expression cDNA Clone or AA Sequence: >RC214790 representing NM_014757
Red=Cloning site **Green**=Tags(s)

MVLPTCPMAEFALPRHSVMERLRRRIELCRRHHSTCEARYEAVSPERLELERQHTFALHQRCIQAKAKR
 AGKHRQPPAATAPAPAAPAPRLDAADGPEHGRPATHLHDTVKNLDSATSPQNGDQQNGYGDLPFGHKKT
 RREAPLGVAISSNGLPPASPLGQSDKPSGADALQSSGKHSGLDSLNNKRLADSSLHLNNGSNPSESFPL
 SLNKEKQEPVEDLPCMITGTVGSISQSNLMPDLNLNEQEWKELIEELNRSVPDEDMKDLFNEDFEEKKD
 PESSGSATQTPLAQDINIKTEFSPAAFEQEQLGSPQVRAGSAGQTFLGPSSAPVSTDSPSLGGSQTLFHT
 SGQPRADNPSPNMPASAQAQNAQRALAGVVLPSPQGGASELSSAHQLQQIAAKQKREQMLQNPQQATP
 APAPGQMSTWQQTGPSHSSLDVPYPMEKPASPSSYKQDFTNSKLLMMPVSNKSSPRPGGPYLQPSHVNLL
 SHQPPSNLNQNSANNQGSVLDYGNTPKLSHYKADCGQSGSPGSGQSKPALMAYLPQQLSHISHEQNLSFLM
 KPKPGNMPFRSLVPPGQEQNPSSVPVQAQATSVGTQPPAVSVASSHNSSPYLSSQQQAAMVQKQHLQDQ
 QKQREQQQKHLQQQFLQRQQHLLAEQEKQFQRHLTRPPPQYQDPTQGSFPQQVQFTGSSAAVPMNT
 LGPSNSSCPRVFPQAGNLMMPMGPHASVSSLPTNSGQQDRGVAQFPGSQNMPQSSLYGMASGITQIVAQP
 PPQATNGHAHIPRQTNVQNTSVSAAYGQNSLGSSGLSQQHNKGTLPGLTKPPVPRVSPAMGGQNSSWQ
 HQGMPNLSGQTPGNSNVSPFTAASSFHMQQQAHLKMSSPQFSQAVPNRPMAPMSSAAAVGSLPPVSAQQ
 RTSAPAPAPPPTAPQQGLPGLSPAGPELGAFSQSPASQMGGRAGLHCTQAYPVRTAGQELPFAYSGQPGG
 SGLSSVAGHTDLIDSLKLNRTSEEWMSDLDDLLGSQ

TRTRPLEQKLISEEDLAANDILDYKDDDDKV

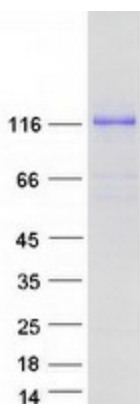
Tag: C-Myc/DDK
Predicted MW: 107.9 kDa
Concentration: >0.05 µg/µL as determined by microplate BCA method
Purity: > 80% as determined by SDS-PAGE and Coomassie blue staining
Buffer: 25 mM Tris-HCl, 100 mM glycine, pH 7.3, 10% glycerol



[View online »](#)

Preparation:	Recombinant protein was captured through anti-DDK affinity column followed by conventional chromatography steps.
Note:	For testing in cell culture applications, please filter before use. Note that you may experience some loss of protein during the filtration process.
Storage:	Store at -80°C.
Stability:	Stable for 12 months from the date of receipt of the product under proper storage and handling conditions. Avoid repeated freeze-thaw cycles.
RefSeq:	NP_055572
Locus ID:	9794
UniProt ID:	Q92585
RefSeq Size:	5745
Cytogenetics:	5q35.3
RefSeq ORF:	3048
Synonyms:	Mam-1; Mam1
Summary:	This protein is the human homolog of mastermind, a Drosophila protein that plays a role in the Notch signaling pathway involved in cell-fate determination. There is in vitro evidence that the human homolog forms a complex with the intracellular portion of human Notch receptors and can increase expression of a Notch-induced gene. This evidence supports its proposed function as a transcriptional co-activator in the Notch signaling pathway. [provided by RefSeq, Jul 2008]
Protein Pathways:	Notch signaling pathway

Product images:



Coomassie blue staining of purified MAML1 protein (Cat# [TP314790]). The protein was produced from HEK293T cells transfected with MAML1 cDNA clone (Cat# [RC214790]) using MegaTran 2.0 (Cat# [TT210002]).