

Product datasheet for TP314776L

MYBPC1 (NM_206821) Human Recombinant Protein

Product data:

Product Type:	Recombinant Proteins
Description:	Recombinant protein of human myosin binding protein C, slow type (MYBPC1), transcript variant 4, 1 mg
Species:	Human
Expression Host:	HEK293T
Expression cDNA Clone or AA Sequence:	>RC214776 protein sequence Red =Cloning site Green =Tags(s)

MPEPTKKEENEVPAPAPPPPEEPSKEKEAGTTPAKDWTLVETPPGEEQAKQNANSQLSILFIEKPQGGTVK
 VGEDITFIKVAEDLLRKPTIKWFKGKWMDLASKAGKHLQLKETFERHSRVYTFEMQIIKAKDNFAGNY
 RCEVYTKDKFDFSCSFDLEVHESTGTPNIDIRSAFKRSGEGQEDAGELDFSGLLKRREVKQEQEEPQVDV
 WELLKNAKPSEYEKIAFQYGITDLRGMLKRLKMRREEKSAFAKILDPAVYQVDKGGRRVRFVVELADPK
 LEVKWYKNGQEIRPSTKYIFEHKGCRILFINNCQMTDDSEYYVTAGDEKSTELFVREPPIMVTKQLED
 TTAYCGERVELECEVSEDDANVKWFKNGEEIIPGPKSRIRVEGKKHILIEGATKADAAEYSVMTTGG
 QSSAKLSVDLKLPLTLDQTVNLGKEICLKCEISENIPGKWTKNGLPVQESDRLKVVHKGRIHKLVI
 ANALTEDEGDYVFAPDAYNVTLPAKVHVIDPPKIILDGLDADNTVTVIAGNKLRLIEPISGEPPPAMWS
 RGDKAIMEGSGRIRTESYPDSSTLVIDIAERDDSGVYHINLKNEAGEAHASIKVKVDFDPPVAPTVE
 VGDDWCIMNWEPPAYDGGSPILGYFIERKKKQSSRWMLNFDLCKETTFFPKMIEGVAYEVRIFAVNAI
 GISKPSMPSRPFVPLAVTSPPTLLTVDSVTDTTVTMRWRPPDHIGAAGLDGYVLEYCFEGTEDWIVANKD
 LIDKTKFTITGLPTDAKIFVRVKAVNAAGASEPKYYSQPILVKEIIEPPKIRIPRHLKQTYIRRVEAVN
 LVIPFQGKPRPELTWKKDGAIDKNQINIRNSETDTIIFIRKAERSHSGKYDLQVKVDKFKVETASIDIQI
 IDRPGPPQIVKIEDVWGENVALTWTPPKDDGNAAITGYTIQKADKKSMEWFTVIEHYHRTSATITELVIG
 NEYYFRVFSENMCGLSEDATMTKESAVIARDGKIYKNPVYEDDFDFSEAPMFTQPLVNTYAIAGYNATLNC
 SVRGNPKPKITWMKNKVAIVDDPRYRMFSNQGVCTLEIRKPSPYDGGTYCCKAVNDLGTVEIECKLEVKV
 IAQ

TRTRPLEQKLISEEDLAANDILDYKDDDDKV

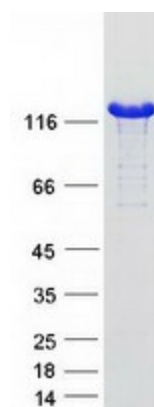
Tag:	C-Myc/DDK
Predicted MW:	126.3 kDa
Concentration:	>0.05 µg/µL as determined by microplate BCA method
Purity:	> 80% as determined by SDS-PAGE and Coomassie blue staining



[View online »](#)

Buffer:	25 mM Tris-HCl, 100 mM glycine, pH 7.3, 10% glycerol
Preparation:	Recombinant protein was captured through anti-DDK affinity column followed by conventional chromatography steps.
Note:	For testing in cell culture applications, please filter before use. Note that you may experience some loss of protein during the filtration process.
Storage:	Store at -80°C.
Stability:	Stable for 12 months from the date of receipt of the product under proper storage and handling conditions. Avoid repeated freeze-thaw cycles.
RefSeq:	NP_996557
Locus ID:	4604
UniProt ID:	Q00872 , Q86TA8
RefSeq Size:	3860
Cytogenetics:	12q23.2
RefSeq ORF:	3369
Synonyms:	LCCS4; MYBPCC; MYBPCS; MYOTREM; ssMyBP-C
Summary:	This gene encodes a member of the myosin-binding protein C family. Myosin-binding protein C family members are myosin-associated proteins found in the cross-bridge-bearing zone (C region) of A bands in striated muscle. The encoded protein is the slow skeletal muscle isoform of myosin-binding protein C and plays an important role in muscle contraction by recruiting muscle-type creatine kinase to myosin filaments. Mutations in this gene are associated with distal arthrogryposis type I. Alternatively spliced transcript variants encoding multiple isoforms have been observed for this gene. [provided by RefSeq, Dec 2011]

Product images:



Coomassie blue staining of purified MYBPC1 protein (Cat# [TP314776]). The protein was produced from HEK293T cells transfected with MYBPC1 cDNA clone (Cat# [RC214776]) using MegaTran 2.0 (Cat# [TT210002]).