

## Product datasheet for TP314776

### MYBPC1 (NM\_206821) Human Recombinant Protein

#### Product data:

Product Type:	Recombinant Proteins
Description:	Recombinant protein of human myosin binding protein C, slow type (MYBPC1), transcript variant 4, 20 µg
Species:	Human
Expression Host:	HEK293T
Expression cDNA Clone or AA Sequence:	>RC214776 protein sequence Red=Cloning site Green=Tags(s)

MPEPTKKEENEVPAPAPPPPEEPSKEKEAGTTPAKDWTLVETPPGEEQAKQNANSQLSILFIEKPQGGTVK  
VGEDITFIAKVAEDLLRKPTIKWFKGKWMDLASKAGKHLQLKETFERHSRVYTFEMQIIKAKDNFAGNY  
RCEVYTKDKFDCSFDLEVHESTGTPNIDIRSAFKRSGEGQEDAGELDFSGLLKRREVKQQEEEPQVDV  
WELLKNAKPSEYEKIAFQYGITDLRGMLKRLKMRREEKSAFAKILDPAVQVDKGGRRVRFVVELADPK  
LEVKWKYKNGQEIRPSTKYIFEHKGCRILFINNCQMTDDSEYYVTAGDEKCESTELFVREPPIMVTKQLED  
TTAYCGERVELECEVSEDDANVKWFKNGEEIIPGPKSRIRIRVEGKKHILIEGATKADAAEYSVMTTGG  
QSSAKLSVDLKLPLTLDQTVNLGKEICLKCEISENIPGKWTKNGLPVQESDRLKVVHKGRIHLKVI  
ANALTEDEGDYVFAPDAYNVTLPAKVHVIDPPKIILDGLDADNTVTVIAGNKLRLIEPISGEPPPAMWS  
RGDKAIMEGSGRIRTESYPDSSTLVIDIAERDDSGVYHINLKNEAGEAHASIKVKVDFDPPVAPTVE  
VGDDWCIMNWEPPAYDGGSPILGYFIERKKKQSSRWMLNFDLCKETTFFPKMIEGVAYEVRIFAVNAI  
GISKPSMPSRPFVPLAVTSPPTLLTVDSVTDTTVTMRWRPPDHIGAAGLDGYVLEYCFEGTEDWIVANKD  
LIDKTKFTITGLPTDAKIFVRVKAVNAAGASEPKYYSQPILVKEIIEPPKIRIPRHLKQTYIRRVEAVN  
LVIPFQGKPRPELTWKKDGAIDKNQINIRNSETDTIIFIRKAERSHSGKYDLQVKVDKFKVETASIDIQI  
IDRPGPPQIVKIEDVWGENVALTWTPPKDDGNAAITGYTIQKADKKSMEWFTVIEHYHRTSATITELVIG  
NEYFRVFSENMCGLSEDATMTKESAVIARDGKIYKNPVYEDDFDFSEAPMFTQPLVNTYAIAGYNATLNC  
SVRGNPKPKITWMKNKVAIVDDPRYRMFSNQGVCTLEIRKPSPYDGGTYCCKAVNDLGTVEIECKLEVKV  
IAQ

TRTRPLEQKLISEEDLAANDILDYKDDDDKV

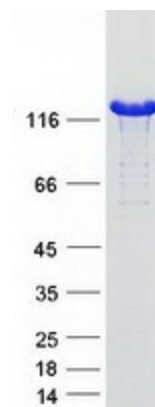
Tag:	C-Myc/DDK
Predicted MW:	126.3 kDa
Concentration:	>0.05 µg/µL as determined by microplate BCA method
Purity:	> 80% as determined by SDS-PAGE and Coomassie blue staining



[View online »](#)

<b>Buffer:</b>	25 mM Tris-HCl, 100 mM glycine, pH 7.3, 10% glycerol
<b>Preparation:</b>	Recombinant protein was captured through anti-DDK affinity column followed by conventional chromatography steps.
<b>Note:</b>	For testing in cell culture applications, please filter before use. Note that you may experience some loss of protein during the filtration process.
<b>Storage:</b>	Store at -80°C.
<b>Stability:</b>	Stable for 12 months from the date of receipt of the product under proper storage and handling conditions. Avoid repeated freeze-thaw cycles.
<b>RefSeq:</b>	<a href="#">NP_996557</a>
<b>Locus ID:</b>	4604
<b>UniProt ID:</b>	<a href="#">Q00872</a> , <a href="#">Q86TA8</a>
<b>RefSeq Size:</b>	3860
<b>Cytogenetics:</b>	12q23.2
<b>RefSeq ORF:</b>	3369
<b>Synonyms:</b>	LCCS4; MYBPCC; MYBPCS; MYOTREM; ssMyBP-C
<b>Summary:</b>	This gene encodes a member of the myosin-binding protein C family. Myosin-binding protein C family members are myosin-associated proteins found in the cross-bridge-bearing zone (C region) of A bands in striated muscle. The encoded protein is the slow skeletal muscle isoform of myosin-binding protein C and plays an important role in muscle contraction by recruiting muscle-type creatine kinase to myosin filaments. Mutations in this gene are associated with distal arthrogryposis type I. Alternatively spliced transcript variants encoding multiple isoforms have been observed for this gene. [provided by RefSeq, Dec 2011]

### Product images:



Coomassie blue staining of purified MYBPC1 protein (Cat# TP314776). The protein was produced from HEK293T cells transfected with MYBPC1 cDNA clone (Cat# [RC214776]) using MegaTran 2.0 (Cat# [TT210002]).