

## Product datasheet for **TP314764L**

### **TBL1Y (NM\_134258) Human Recombinant Protein**

#### **Product data:**

<b>Product Type:</b>	Recombinant Proteins
<b>Description:</b>	Recombinant protein of human transducin (beta)-like 1Y-linked (TBL1Y), transcript variant 2, 1 mg
<b>Species:</b>	Human
<b>Expression Host:</b>	HEK293T
<b>Expression cDNA</b>	>RC214764 protein sequence
<b>Clone or AA Sequence:</b>	Red=Cloning site Green=Tags(s)

MSITSDEVNFLVYRYLQESGFHSAFTFGIESHISQSNINGTLVPPSALISILQKGLQYVEAEISINKDG  
TVFDSRPIESLSLIVAVIPDVVQMRQQAFGEKLTQQQASAAATEASAMAKAATMTPAAISQQNPPKNREA  
TVNGEENGAHEINNHSKPMIDGDVEIPPKNATVLRGHESEVFCAWNPNVSDLLASGSGDSTARIWNLNE  
NSNGGSTQLVLRHCIREGGHDVPSNKDVTSLDWNSDGTLLAMGSYDGFARIWTENGLASTLGQHKGPFI  
ALKWNKKGNVLSAGVDKTTIIWDAHTGEAKQQFPFHSAPALDVDWQNNMTFASCSTDMCIHVCRLGCDH  
PVKTFQGHTNEVNAIKWDPSGMLLASCSDMTLKIWSMKQDACVHDLQAHSKEIYTIKWSPTGPATSNPN  
SSIMLASASFDSTVRLWDVEQGVCTHTLMKHQEPVYSVAFSPDGKYLASGSFDKYVHIWNTQSGSLVHSY  
QGTGGIFEVCWNARGDKVGASASDGSVCVLDL

TRTRPLEQKLISEEDLAANDILDYKDDDDKV

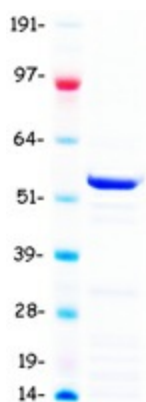
<b>Tag:</b>	C-Myc/DDK
<b>Predicted MW:</b>	56.5 kDa
<b>Concentration:</b>	>0.05 µg/µL as determined by microplate BCA method
<b>Purity:</b>	> 80% as determined by SDS-PAGE and Coomassie blue staining
<b>Buffer:</b>	25 mM Tris-HCl, 100 mM glycine, pH 7.3, 10% glycerol
<b>Preparation:</b>	Recombinant protein was captured through anti-DDK affinity column followed by conventional chromatography steps.
<b>Note:</b>	For testing in cell culture applications, please filter before use. Note that you may experience some loss of protein during the filtration process.
<b>Storage:</b>	Store at -80°C.



[View online »](#)

<b>Stability:</b>	Stable for 12 months from the date of receipt of the product under proper storage and handling conditions. Avoid repeated freeze-thaw cycles.
<b>RefSeq:</b>	<a href="#">NP_599020</a>
<b>Locus ID:</b>	90665
<b>UniProt ID:</b>	<a href="#">Q9BQ87</a> , <a href="#">A0A024R189</a>
<b>RefSeq Size:</b>	2376
<b>Cytogenetics:</b>	Yp11.2
<b>RefSeq ORF:</b>	1566
<b>Synonyms:</b>	DFNY2; TBL1
<b>Summary:</b>	The protein encoded by this gene has sequence similarity with members of the WD40 repeat-containing protein family. The WD40 group is a large family of proteins, which appear to have a regulatory function. It is believed that the WD40 repeats mediate protein-protein interactions and members of the family are involved in signal transduction, RNA processing, gene regulation, vesicular trafficking, cytoskeletal assembly and may play a role in the control of cytotypic differentiation. This gene is highly similar to TBL1X gene in nucleotide sequence and protein sequence, but the TBL1X gene is located on chromosome X and this gene is on chromosome Y. This gene has three alternatively spliced transcript variants encoding the same protein. [provided by RefSeq, Jul 2008]
<b>Protein Families:</b>	Transcription Factors
<b>Protein Pathways:</b>	Wnt signaling pathway

### Product images:



Coomassie blue staining of purified TBL1Y protein (Cat# [TP314764]). The protein was produced from HEK293T cells transfected with TBL1Y cDNA clone (Cat# [RC214764]) using MegaTran 2.0 (Cat# [TT210002]).