

Product datasheet for **TP314740M**

Cardiac Troponin I (TNNI3) (NM_000363) Human Recombinant Protein

Product data:

Product Type:	Recombinant Proteins
Description:	Recombinant protein of human troponin I type 3 (cardiac) (TNNI3), 100 µg
Species:	Human
Expression Host:	HEK293T
Expression cDNA Clone or AA Sequence:	>RC214740 representing NM_000363 Red =Cloning site Green =Tags(s)
	 MADGSSDAAREPRPAPAPIRRRSSNYRAYATEPHAKKSKISASRKLQLKTLTLLQIAKQELEREAEEERRG EKGRALSTRCQPLELAGLGFAELQDLCRQLHARVDKVDDEERYDIEAKVTKNITEIADLTQKIFDLRGKFK RPTLRRVRISADAMMQALLGARAKESLDLRAHLKQVKKEDTEKENREVGDWKRNIDALSGMEGRKKKFFES TRTRPLEQKLISEEDLAANDILDYKDDDDKV
Tag:	C-Myc/DDK
Predicted MW:	23.8 kDa
Concentration:	>0.05 µg/µL as determined by microplate BCA method
Purity:	> 80% as determined by SDS-PAGE and Coomassie blue staining
Buffer:	25 mM Tris-HCl, 100 mM glycine, pH 7.3, 10% glycerol
Preparation:	Recombinant protein was captured through anti-DDK affinity column followed by conventional chromatography steps.
Note:	For testing in cell culture applications, please filter before use. Note that you may experience some loss of protein during the filtration process.
Storage:	Store at -80°C.
Stability:	Stable for 12 months from the date of receipt of the product under proper storage and handling conditions. Avoid repeated freeze-thaw cycles.
RefSeq:	NP_000354
Locus ID:	7137
UniProt ID:	P19429 , Q6FGX2
RefSeq Size:	2073



[View online »](#)

Cytogenetics: 19q13.42

RefSeq ORF: 630

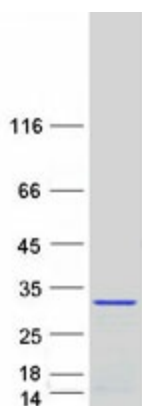
Synonyms: CMD1FF; CMD2A; CMH7; cTnI; RCM1; TNNC1

Summary: Troponin I (TnI), along with troponin T (TnT) and troponin C (TnC), is one of 3 subunits that form the troponin complex of the thin filaments of striated muscle. TnI is the inhibitory subunit; blocking actin-myosin interactions and thereby mediating striated muscle relaxation. The TnI subfamily contains three genes: TnI-skeletal-fast-twitch, TnI-skeletal-slow-twitch, and TnI-cardiac. This gene encodes the TnI-cardiac protein and is exclusively expressed in cardiac muscle tissues. Mutations in this gene cause familial hypertrophic cardiomyopathy type 7 (CMH7) and familial restrictive cardiomyopathy (RCM). Troponin I is useful in making a diagnosis of heart failure, and of ischemic heart disease. An elevated level of troponin is also now used as indicator of acute myocardial injury in patients hospitalized with moderate/severe Coronavirus Disease 2019 (COVID-19). Such elevation has also been associated with higher risk of mortality in cardiovascular disease patients hospitalized due to COVID-19. [provided by RefSeq, Aug 2020]

Protein Families: Druggable Genome, ES Cell Differentiation/IPS, Stem cell - Pluripotency

Protein Pathways: Cardiac muscle contraction, Dilated cardiomyopathy, Hypertrophic cardiomyopathy (HCM)

Product images:



Coomassie blue staining of purified TNNI3 protein (Cat# [TP314740]). The protein was produced from HEK293T cells transfected with TNNI3 cDNA clone (Cat# [RC214740]) using MegaTran 2.0 (Cat# [TT210002]).