

Product datasheet for **TP314703M**

LYPD2 (NM_205545) Human Recombinant Protein

Product data:

Product Type:	Recombinant Proteins
Description:	Recombinant protein of human LY6/PLAUR domain containing 2 (LYPD2), 100 µg
Species:	Human
Expression Host:	HEK293T
Expression cDNA Clone or AA Sequence:	>RC214703 protein sequence Red =Cloning site Green =Tags(s)
	MRGTQLVLLALVLAACGELAPALRCYVCPEPTGVSDCVTIATCTTNETMCKTTLYSREIVYPFQGDSTVT KSCASKCKPSDVDGIGQTLPSCCNTELCNVDGAPALNSLHCGALTLLPLLSLRL
	TR TRPLE QKLISEEDLA ANDILDYKDDDDKV
Tag:	C-Myc/DDK
Predicted MW:	12.9 kDa
Concentration:	>0.05 µg/µL as determined by microplate BCA method
Purity:	> 80% as determined by SDS-PAGE and Coomassie blue staining
Buffer:	25 mM Tris-HCl, 100 mM glycine, pH 7.3, 10% glycerol
Preparation:	Recombinant protein was captured through anti-DDK affinity column followed by conventional chromatography steps.
Note:	For testing in cell culture applications, please filter before use. Note that you may experience some loss of protein during the filtration process.
Storage:	Store at -80°C.
Stability:	Stable for 12 months from the date of receipt of the product under proper storage and handling conditions. Avoid repeated freeze-thaw cycles.
RefSeq:	<u>NP_991108</u>
Locus ID:	137797
UniProt ID:	<u>Q6UXB3</u>
RefSeq Size:	550
Cytogenetics:	8q24.3

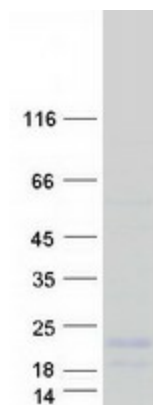


[View online »](#)

RefSeq ORF: 375

Synonyms: LYPDC2; UNQ430

Product images:



Coomassie blue staining of purified LYPD2 protein (Cat# [TP314703]). The protein was produced from HEK293T cells transfected with LYPD2 cDNA clone (Cat# [RC214703]) using MegaTran 2.0 (Cat# [TT210002]).