

## Product datasheet for **TP314678M**

### PRDM7 (NM\_052996) Human Recombinant Protein

#### Product data:

Product Type:	Recombinant Proteins
Description:	Recombinant protein of human PR domain containing 7 (PRDM7), transcript variant 2, 100 µg
Species:	Human
Expression Host:	HEK293T
Expression cDNA Clone or AA Sequence:	>RC214678 protein sequence <b>Red</b> =Cloning site <b>Green</b> =Tags(s)

MCQNFFIDSCAAHGPPFTVKDSAVDKGHPNRSALSPPGLRIGPSGIPQAGLGWNEASDLPLGLHFGPY  
 EGRITDEEAANSYGYSWLITKGRNCYEYVDGKDKSSANWMRTKARDPSMSLMLSGLFKSKISQSTCGTQS  
 LLELPRTICKKTSPTRESLPRGSESGAAIF

**TRTRPLEQKLISEEDLAANDILDYKDDDDKV**

Tag:	C-Myc/DDK
Predicted MW:	18.3 kDa
Concentration:	>0.05 µg/µL as determined by microplate BCA method
Purity:	> 80% as determined by SDS-PAGE and Coomassie blue staining
Buffer:	25 mM Tris-HCl, 100 mM glycine, pH 7.3, 10% glycerol
Preparation:	Recombinant protein was captured through anti-DDK affinity column followed by conventional chromatography steps.
Note:	For testing in cell culture applications, please filter before use. Note that you may experience some loss of protein during the filtration process.
Storage:	Store at -80°C.
Stability:	Stable for 12 months from the date of receipt of the product under proper storage and handling conditions. Avoid repeated freeze-thaw cycles.
RefSeq:	<u><a href="#">NP_443722</a></u>
Locus ID:	11105
UniProt ID:	<u><a href="#">Q9NQW5</a></u>
RefSeq Size:	2504


[View online »](#)

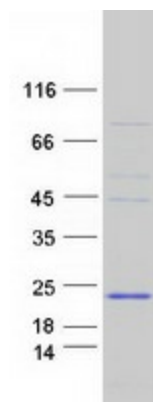
**Cytogenetics:** 16q24.3

**RefSeq ORF:** 513

**Synonyms:** PFM4; ZNF910

**Summary:** This gene encodes a member of a family of proteins that may have roles in transcription and other nuclear processes. The encoded protein contains a KRAB (Kruppel-associated box) domain -A box and a SET (Su(var)3-9, Enhancer-of-zeste, Trithorax) domain and may function as a histone methyltransferase. [provided by RefSeq, Aug 2013]

## Product images:



Coomassie blue staining of purified PRDM7 protein (Cat# [TP314678]). The protein was produced from HEK293T cells transfected with PRDM7 cDNA clone (Cat# [RC214678]) using MegaTran 2.0 (Cat# [TT210002]).