

## Product datasheet for **TP314653L**

### EML4 (NM\_019063) Human Recombinant Protein

#### Product data:

Product Type:	Recombinant Proteins
Description:	Purified recombinant protein of Homo sapiens echinoderm microtubule associated protein like 4 (EML4), transcript variant 1, 1 mg
Species:	Human
Expression Host:	HEK293T
Expression cDNA Clone or AA Sequence:	>RC214653 representing NM_019063 <b>Red</b> =Cloning site <b>Green</b> =Tags(s)

MDGFAGSLDDISAASTSDVQDRLSALESRVQQEDEITVLKAAALADVLRRLAISEDHVASVKKSVSSKG  
QPSPRAVIPMSCITNGSGANRKPSHTSAVSIAGKETLSSAAKSGTEKKKEKPQQREKKEESHNSNDQSPQ  
IRASPPQPSSQPLQIHRQTPESKNATPTKSIKRPSPAESHNSWENSDDSRNLSKIPSTPKLIPKVTK  
TADKHKDVIINQEGEYIKMFMGRPITMFIKPSDSDVNYDDIRTELPPEKLEWAYGYRGKDCRANVYLLP  
TGEIVYFIASVWVLFNYEERTQRHYLGHTDCVKCLAIHPDKIRIATGQIAGVDKGRPLQPHVRVWDSVT  
LSTLQIIGLGTFFERGVGCLDFSKADSGVHLCVIDDSNEHMLTVWDWQKKAKGAEIKTTNEVLAVEFHPT  
DANTIITCGKSHIFFWTWGSNSLTRKQGFQIEVQGHTEDELWGLATHPFKDLLLTCADRQVCLWNSMEHRLWTR  
LVDEPGHCADFHPSGTVAIGTHSGRWFVLD AETRDLVSIHTDGNELQSVSMRYSIDGTFLAVGSHDNFIY  
LYVSENGRKYSRYGCTGHSSYITHLDWSPDNKYIMNSGDIYELWDPNGCKLIRNRSDCKDIDWTT  
YTCVLGFQVFGVWPEGSDGTDINALVRSHNRKVIADDFCKVHLFQYPCSKAKAPSHKYSAHSSHTNV  
SFTHNDSHLISTGGKMSIIQWKLVEKLSLPQNETVADTTLTAKPVSSSTESVIQSNTPTPPPSQPLNETA  
EEESRISSPTLLENSLEQTVPESEDHSEEESEEGSGDLGEPLEPCNEISKEQAKATLLEDQQDPSPS  
S

**TRTRPLEQKLISEEDLAANDILDYKDDDDKV**

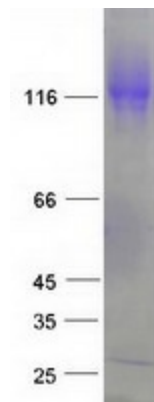
Tag:	C-Myc/DDK
Predicted MW:	108.7 kDa
Concentration:	>0.05 µg/µL as determined by microplate BCA method
Purity:	> 80% as determined by SDS-PAGE and Coomassie blue staining
Buffer:	25 mM Tris-HCl, 100 mM glycine, pH 7.3, 10% glycerol



[View online »](#)

<b>Preparation:</b>	Recombinant protein was captured through anti-DDK affinity column followed by conventional chromatography steps.
<b>Note:</b>	For testing in cell culture applications, please filter before use. Note that you may experience some loss of protein during the filtration process.
<b>Storage:</b>	Store at -80°C.
<b>Stability:</b>	Stable for 12 months from the date of receipt of the product under proper storage and handling conditions. Avoid repeated freeze-thaw cycles.
<b>RefSeq:</b>	<a href="#">NP_061936</a>
<b>Locus ID:</b>	27436
<b>UniProt ID:</b>	<a href="#">Q9HC35</a>
<b>RefSeq Size:</b>	5539
<b>Cytogenetics:</b>	2p21
<b>RefSeq ORF:</b>	2943
<b>Synonyms:</b>	C2orf2; ELP120; EMAP-4; EMAPL4; ROPP120
<b>Summary:</b>	This gene is a member of the echinoderm microtubule associated protein-like family. The encoded WD-repeat protein may be involved in microtubule formation. Abnormal fusion of parts of this gene with portions of the anaplastic lymphoma receptor tyrosine kinase gene, which generates EML4-ALK fusion transcripts, is one of the primary mutations associated with non-small cell lung cancer. Alternative splicing of this gene results in two transcript variants. [provided by RefSeq, Jan 2015]
<b>Protein Families:</b>	Druggable Genome

### Product images:



Coomassie blue staining of purified EML4 protein (Cat# [TP314653]). The protein was produced from HEK293T cells transfected with EML4 cDNA clone (Cat# [RC214653]) using MegaTran 2.0 (Cat# [TT210002]).