

Product datasheet for **TP314649L**

CCDC85A (NM_001080433) Human Recombinant Protein

Product data:

Product Type:	Recombinant Proteins
Description:	Recombinant protein of human coiled-coil domain containing 85A (CCDC85A), 1 mg
Species:	Human
Expression Host:	HEK293T
Expression cDNA Clone or AA Sequence:	>RC214649 representing NM_001080433 Red =Cloning site Green =Tags(s)
	<p>MSKAAGGAAAAAAAAAESCSPAPAGSSAAPPAPVEDLSKVSDEELLQWSKEELIRSLRRAEAEKVSAMLDH SNLIREVNRRLQLHLGEIRGLKDINQKLQEDNQELRDLCFLDDDRQKGRVSRWQRLGRYTAGVMHKE VALYLQKLKDLEVKQEEVVKENMELKELCVLLDEEKGAGCAGSRCSIDSQASLCQLTASTAPYVRDVGDG SSTSSTGSTDSPDHHKHHASSGSPEHLQKPRSEGSPEHSKHSASPEHPQKPRACGTPDRPKALKGPSPE HHKPLCKGSPEQQRHPHPGSSPETLPKHVLSGSPEHFQKHSRSGSSPEHARHSGGSPEHLQKHALGGSLKH LPRARGTSPEHLKQHYGGSPDHKHGGGGGGSGGGSGGGSGREGTLRRQAQEDGSPHHRNVYSGMNESTLSYV RQLEARVRQLEENRMLPQASQNRQPPTNRSSNMEKGWGSRARRVLQWWQGCRGIGRCLPTLPGSFRLS SGADGSNSSPNSAASFSGHATPSQQPEPVVHSLKVVWRKLGDAAGSFCGIRQHLSGNQYKQKGM</p> <p>TRTRPLEQKLISEEDLAANDILDYKDDDDKV</p>
Tag:	C-Myc/DDK
Predicted MW:	59.8 kDa
Concentration:	>0.05 µg/µL as determined by microplate BCA method
Purity:	> 80% as determined by SDS-PAGE and Coomassie blue staining
Buffer:	25 mM Tris-HCl, 100 mM glycine, pH 7.3, 10% glycerol
Preparation:	Recombinant protein was captured through anti-DDK affinity column followed by conventional chromatography steps.
Note:	For testing in cell culture applications, please filter before use. Note that you may experience some loss of protein during the filtration process.
Storage:	Store at -80°C.
Stability:	Stable for 12 months from the date of receipt of the product under proper storage and handling conditions. Avoid repeated freeze-thaw cycles.



[View online »](#)

RefSeq: [NP_001073902](#)

Locus ID: 114800

UniProt ID: [Q96PX6](#)

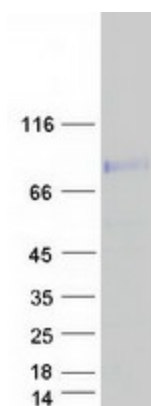
RefSeq Size: 3983

Cytogenetics: 2p16.1

RefSeq ORF: 1659

Summary: May play a role in cell-cell adhesion and epithelium development through its interaction with proteins of the beta-catenin family.[UniProtKB/Swiss-Prot Function]

Product images:



Coomassie blue staining of purified CCDC85A protein (Cat# [TP314649]). The protein was produced from HEK293T cells transfected with CCDC85A cDNA clone (Cat# [RC214649]) using MegaTran 2.0 (Cat# [TT210002]).