

## Product datasheet for TP314639M

### MALT1 (NM\_006785) Human Recombinant Protein

#### Product data:

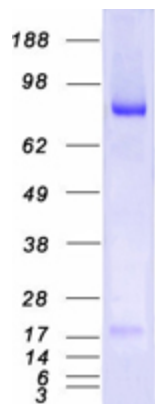
Product Type:	Recombinant Proteins
Description:	Recombinant protein of human mucosa associated lymphoid tissue lymphoma translocation gene 1 (MALT1), transcript variant 1, 100 µg
Species:	Human
Expression Host:	HEK293T
Expression cDNA Clone or AA Sequence:	>RC214639 representing NM_006785 <b>Red</b> =Cloning site <b>Green</b> =Tags(s)
	<p>MSLLGDPLQALPPSAAPTGPLLAPPAGATLNRLREPLLRRLESELLDQAPEGRGWRRLAELAGSRGRLRLS          CLDLEQCSLKVLEPEGSPSLCLKLMGEGCTVTELSDFLQAMEHTEVLQLLSPPGIKITVNPESKAVLA          GQFVKLCCRATGHPFVYQWFKMNKEIPNGNTSELIFNAVHVKDAGFYVCRVNNNFTFEFSQWSQLDVCD          IPESFQRSVDGVSESKLQICVEPTSQKLMGSLVLVQCVAVGSPIPHYQWFKNELPLTHETKKLYMPVYV          DLEHQGTYWCHVYNDRDSQDSKKVEIIIIGRTDEAVECTEDELNNLGHPDNKEQTTDQPLAKDKVALLIGN          MNYREHPKLKAPLVDVYELTNLLRQLDFKVSLLDLTEYEMRNAVDEFLLLLDKGVYGLLYAGHGYENF          GNSFMVPVDAPNPYRSENCLCVQNILKLMQEKETGLNVFLDMCRKRNDYDDTIPILDALKVTANIVFGY          ATCQGAEAFEIQHSLANGIFMKFLKDRLLEDKKITVLLDEVAEDMGKCHLTGKGQALEIRSSLSEKRAL          TDPIQGTEYSAESLVRNLQWAKAHELPEMCLKFDGCVQIQLGFAAEFSNMIIYTSIVYKPEIIMCDA          YVTDPLDLDDIDPKDANKGTPEETGSYLVSKDLPHKCLYTRLSSLQKLKEHLVFTVCLSYQYSGLEDTVE          DKQEVNVGKPLIAKLDMHRGLGRKTCFQTCLMSNGPYQSSAATSGGAGHYHSLQDPFHGVYHSHPGNPSN          VTPADSCHCSRTPDAFISSFAHHASCHFSRSNVPVETTDEIPFSFSDRLRISEK</p> <p><b>TRTRPLEQKLISEEDLAANDILDYKDDDDKV</b></p>
Tag:	C-Myc/DDK
Predicted MW:	92.1 kDa
Concentration:	>0.1 µg/µL as determined by microplate BCA method
Purity:	> 80% as determined by SDS-PAGE and Coomassie blue staining
Buffer:	25 mM Tris-HCl, 100 mM glycine, pH 7.3, 10% glycerol
Preparation:	Recombinant protein was captured through anti-DDK affinity column followed by conventional chromatography steps.



[View online »](#)

<b>Note:</b>	For testing in cell culture applications, please filter before use. Note that you may experience some loss of protein during the filtration process.
<b>Storage:</b>	Store at -80°C.
<b>Stability:</b>	Stable for 12 months from the date of receipt of the product under proper storage and handling conditions. Avoid repeated freeze-thaw cycles.
<b>RefSeq:</b>	<a href="#">NP_006776</a>
<b>Locus ID:</b>	10892
<b>UniProt ID:</b>	<a href="#">Q9UDY8</a> , <a href="#">A8K5S1</a>
<b>RefSeq Size:</b>	5029
<b>Cytogenetics:</b>	18q21.32
<b>RefSeq ORF:</b>	2472
<b>Synonyms:</b>	IMD12; MLT; MLT1; PCASP1
<b>Summary:</b>	This gene encodes a caspase-like protease that plays a role in BCL10-induced activation of NF-kappaB. The protein is a component of the CARMA1-BCL10-MALT1 (CBM) signalosome that triggers NF-kappaB signaling and lymphocyte activation following antigen-receptor stimulation. Mutations in this gene result in immunodeficiency 12 (IMD12). This gene has been found to be recurrently rearranged in chromosomal translocations with other genes in mucosa-associated lymphoid tissue lymphomas, including a t(11;18)(q21;q21) translocation with the baculoviral IAP repeat-containing protein 3 (also known as apoptosis inhibitor 2) locus [BIRC3(API2)-MALT1], and a t(14;18)(q32;q21) translocation with the immunoglobulin heavy chain locus (IGH-MALT1). Alternatively spliced transcript variants have been described for this gene. [provided by RefSeq, May 2018]
<b>Protein Families:</b>	Druggable Genome, Protease
<b>Protein Pathways:</b>	B cell receptor signaling pathway, T cell receptor signaling pathway

### Product images:



Coomassie blue staining of purified MALT1 protein (Cat# [TP314639]). The protein was produced from HEK293T cells transfected with MALT1 cDNA clone (Cat# [RC214639]) using MegaTran 2.0 (Cat# [TT210002]).