

## Product datasheet for **TP314638M**

### ASRGL1 (NM\_001083926) Human Recombinant Protein

#### Product data:

Product Type:	Recombinant Proteins
Description:	Recombinant protein of human asparaginase like 1 (ASRGL1), transcript variant 1, 100 µg
Species:	Human
Expression Host:	HEK293T
Expression cDNA Clone or AA Sequence:	>RC214638 representing NM_001083926 <b>Red</b> =Cloning site <b>Green</b> =Tags(s)
	 MNPIVVHGGGAGPISKDRKERVHQGMVRAATVGYGILREGGSAVDAVEGAVVALEDDPEFNAGCGSVLN TNGEVEMDASIMDGKDSAGAVSAVQCIANPIKLARLVMKTPHCFLTDQGAAQFAAAMGVPEIPGEKLV TERNKKRLEKEKHEKGAQKTDQCQNLGTVGAVALDCKGNVAYATSTGGIVNKMVGRVGDSPCLGAGGYAD NDIGAVSTTGHGESILKVNLARLTLFHIEQGKTVEEAADLSLGYMKSRVKGLGGLIVSKTGDWVAKWTS TSMPWAAAKDGKLFHFGIDPDDTTITDLP  <b>TRTRPLEQKLISEEDLAANDILDYKDDDDKV</b>
Tag:	C-Myc/DDK
Predicted MW:	31.9 kDa
Concentration:	>0.05 µg/µL as determined by microplate BCA method
Purity:	> 80% as determined by SDS-PAGE and Coomassie blue staining
Buffer:	25 mM Tris-HCl, 100 mM glycine, pH 7.3, 10% glycerol
Preparation:	Recombinant protein was captured through anti-DDK affinity column followed by conventional chromatography steps.
Note:	For testing in cell culture applications, please filter before use. Note that you may experience some loss of protein during the filtration process.
Storage:	Store at -80°C.
Stability:	Stable for 12 months from the date of receipt of the product under proper storage and handling conditions. Avoid repeated freeze-thaw cycles.
RefSeq:	<u><a href="#">NP_001077395</a></u>
Locus ID:	80150



[View online »](#)

UniProt ID: [Q7L266](#), [A0A024R573](#)

RefSeq Size: 2424

Cytogenetics: 11q12.3

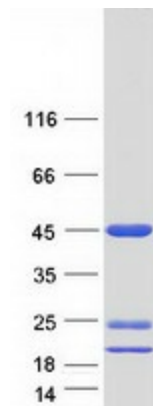
RefSeq ORF: 924

Synonyms: ALP; ALP1; CRASH

**Summary:** Has both L-asparaginase and beta-aspartyl peptidase activity. May be involved in the production of L-aspartate, which can act as an excitatory neurotransmitter in some brain regions. Is highly active with L-Asp beta-methyl ester. Besides, has catalytic activity toward beta-aspartyl dipeptides and their methyl esters, including beta-L-Asp-L-Phe, beta-L-Asp-L-Phe methyl ester (aspartame), beta-L-Asp-L-Ala, beta-L-Asp-L-Leu and beta-L-Asp-L-Lys. Does not have aspartylglucosaminidase activity and is inactive toward GlcNAc-L-Asn. Likewise, has no activity toward glutamine.[UniProtKB/Swiss-Prot Function]

**Protein Families:** Protease

### Product images:



Coomassie blue staining of purified ASRGL1 protein (Cat# [TP314638]). The protein was produced from HEK293T cells transfected with ASRGL1 cDNA clone (Cat# [RC214638]) using MegaTran 2.0 (Cat# [TT210002]).