

Product datasheet for **TP314619L**

GLEPP1 (PTPRO) (NM_030669) Human Recombinant Protein

Product data:

Product Type:	Recombinant Proteins
Description:	Recombinant protein of human protein tyrosine phosphatase, receptor type, O (PTPRO), transcript variant 3, 1 mg
Species:	Human
Expression Host:	HEK293T
Expression cDNA Clone or AA Sequence:	>Peptide sequence encoded by RC214619 Blue=ORF Red=Cloning site Green=Tag(s)

MVTEMNPNVWVISVLAILSTLLIGLLLVTLLIILRKKHLQMARECGAGTFVNFASLERDGLPYNWRRSI
FAFLTLLPSCLWTDYLLAFYINPWSKNGLKKRKLTPVQLDDFDAYIKDMAKDSYKFSLQFEELKLG
LDIPHFAADLPLNRCKNRYTNILPYDFSRVRLVSMNEEGADYINANYIPGYNSPQEYIATQGPLPETR
NDFWKMVLQKQSQIIVMLTQCNEKRRVKCDHYWPFTEEPIAYGDITVEMISEEEQDDWACRHFRIYAD
EMQDVMHFNYTAWPDHGVPTANAAESILQFVHMVRQQATKSKGPMIIHCSAGVGRGTGFIALDRLLQHI
RDHEFVDILGLVSEMRYSRMSMVQTEEQYIFIHQCVQLMWMKKKQFCISDVIYENVSKS
TRTRPLEQKLISEEDLAANDILDYKDDDDKV

Recombinant protein using RC214619 also available, [TP314619](#)

Tag:	C-Myc/DDK
Predicted MW:	47 kDa
Concentration:	>0.05 µg/µL as determined by microplate BCA method
Purity:	> 80% as determined by SDS-PAGE and Coomassie blue staining
Buffer:	25 mM Tris-HCl, 100 mM glycine, pH 7.3, 10% glycerol
Preparation:	Recombinant protein was captured through anti-DDK affinity column followed by conventional chromatography steps.
Note:	For testing in cell culture applications, please filter before use. Note that you may experience some loss of protein during the filtration process.
Storage:	Store at -80°C.
Stability:	Stable for 12 months from the date of receipt of the product under proper storage and handling conditions. Avoid repeated freeze-thaw cycles.



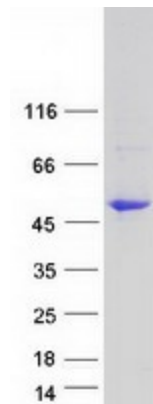
[View online »](#)

RefSeq:	NP_109594
Locus ID:	5800
UniProt ID:	Q16827 , A0A024RAS9
RefSeq Size:	3970
Cytogenetics:	12p13-p12
RefSeq ORF:	1215
Synonyms:	GLEPP1; NPHS6; PTP-OC; PTP-U2; PTPROT; PTPU2; R-PTP-O

Summary: This gene encodes a member of the R3 subtype family of receptor-type protein tyrosine phosphatases. These proteins are localized to the apical surface of polarized cells and may have tissue-specific functions through activation of Src family kinases. This gene contains two distinct promoters, and alternatively spliced transcript variants encoding multiple isoforms have been observed. The encoded proteins may have multiple isoform-specific and tissue-specific functions, including the regulation of osteoclast production and activity, inhibition of cell proliferation and facilitation of apoptosis. This gene is a candidate tumor suppressor, and decreased expression of this gene has been observed in several types of cancer. [provided by RefSeq, May 2011]

Protein Families: Phosphatase, Transmembrane

Product images:



Coomassie blue staining of purified PTPRO protein (Cat# [TP314619]). The protein was produced from HEK293T cells transfected with PTPRO cDNA clone (Cat# [RC214619]) using MegaTran 2.0 (Cat# [TT210002]).