

Product datasheet for **TP314616L**

FSH beta (FSHB) (NM_001018080) Human Recombinant Protein

Product data:

Product Type:	Recombinant Proteins
Description:	Recombinant protein of human follicle stimulating hormone, beta polypeptide (FSHB), transcript variant 2, 1 mg
Species:	Human
Expression Host:	HEK293T
Expression cDNA Clone or AA Sequence:	>RC214616 representing NM_001018080 Red =Cloning site Green =Tags(s)
	MKTLQFFFLFCCWKAICCNSELTNITIAIEKEECRFCISINTTWCAGYCYTRDLVYKDPARPKIQKTCT FKELVYETVRVPGCAHHADSLYTPVATQCHCGKCDSDSTDCTVRGLGPSYCSFGEMKE
	TRTRPLEQKLISEEDLAANDILDYKDDDDKV
Tag:	C-Myc/DDK
Predicted MW:	12.4 kDa
Concentration:	>0.05 µg/µL as determined by microplate BCA method
Purity:	> 80% as determined by SDS-PAGE and Coomassie blue staining
Buffer:	25 mM Tris-HCl, 100 mM glycine, pH 7.3, 10% glycerol
Preparation:	Recombinant protein was captured through anti-DDK affinity column followed by conventional chromatography steps.
Note:	For testing in cell culture applications, please filter before use. Note that you may experience some loss of protein during the filtration process.
Storage:	Store at -80°C.
Stability:	Stable for 12 months from the date of receipt of the product under proper storage and handling conditions. Avoid repeated freeze-thaw cycles.
RefSeq:	NP_001018090
Locus ID:	2488
UniProt ID:	P01225 , A0A0F7RQE8
RefSeq Size:	1906



[View online »](#)

Cytogenetics: 11p14.1

RefSeq ORF: 387

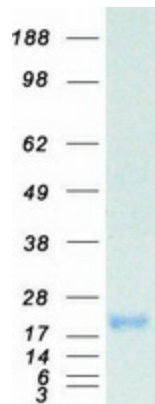
Synonyms: HH24

Summary: The pituitary glycoprotein hormone family includes follicle-stimulating hormone, luteinizing hormone, chorionic gonadotropin, and thyroid-stimulating hormone. All of these glycoproteins consist of an identical alpha subunit and a hormone-specific beta subunit. This gene encodes the beta subunit of follicle-stimulating hormone. In conjunction with luteinizing hormone, follicle-stimulating hormone induces egg and sperm production. Alternative splicing results in two transcript variants encoding the same protein. [provided by RefSeq, Jul 2008]

Protein Families: Druggable Genome, Secreted Protein

Protein Pathways: GnRH signaling pathway, Neuroactive ligand-receptor interaction

Product images:



Coomassie blue staining of purified FSHB protein (Cat# [TP314616]). The protein was produced from HEK293T cells transfected with FSHB cDNA clone (Cat# [RC214616]) using MegaTran 2.0 (Cat# [TT210002]).