

Product datasheet for TP314605

TBX1 (NM_080646) Human Recombinant Protein

Product data:

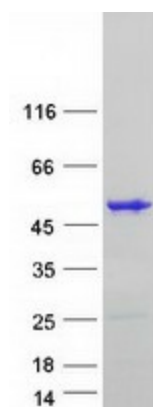
Product Type:	Recombinant Proteins
Description:	Recombinant protein of human T-box 1 (TBX1), transcript variant A, 20 µg
Species:	Human
Expression Host:	HEK293T
Expression cDNA Clone or AA Sequence:	>RC214605 representing NM_080646 Red =Cloning site Green =Tags(s) <p>MHFSTVTRDMEAF TASSLSS LGAAGGFPGAASPGADPYGPREPPPPPRYDPCAAAAPGAPGPPPPHAY PFAPAAGAATSAAA EPEGPGASCAAAA KAPVKKNAKVAGVSVQLEMKALWDEFNQLGTEMIVTKAGRRMF PTFQVKLFGMDPMADYMLLMDFVPVDDKRYRYAFHSSSWLVAGKADPATPGRVHYHPDSPAKGAQWMKQI VSFDKLLKLTNNLLDDNGHIILNSMHRYQPRFHVVYVDPKRDSEKYAENFKTFVFEETRFTA VTAYQNHR ITQLKIASNPFAGFRDCDPEDWPRNHRGALPLMSAFARSRNPV ASPTQPSGTEKGGHVLKDKVKAET SRNTPEREVELLRDAGGC VNLGLPCPAECQPFNTQGLVAGRTAGDRLC</p> <p>TRTRPLEQKLISEEDLAANDILDYKDDDDKV</p>
Tag:	C-Myc/DDK
Predicted MW:	43 kDa
Concentration:	>0.05 µg/µL as determined by microplate BCA method
Purity:	> 80% as determined by SDS-PAGE and Coomassie blue staining
Buffer:	25 mM Tris-HCl, 100 mM glycine, pH 7.3, 10% glycerol
Preparation:	Recombinant protein was captured through anti-DDK affinity column followed by conventional chromatography steps.
Note:	For testing in cell culture applications, please filter before use. Note that you may experience some loss of protein during the filtration process.
Storage:	Store at -80°C.
Stability:	Stable for 12 months from the date of receipt of the product under proper storage and handling conditions. Avoid repeated freeze-thaw cycles.
RefSeq:	NP_542377
Locus ID:	6899



[View online »](#)

UniProt ID:	O43435
RefSeq Size:	1482
Cytogenetics:	22q11.21
RefSeq ORF:	1194
Synonyms:	CAFS; CATCH22; CTHM; DGCR; DGS; DORV; TBX1C; TGA; VCF; VCFS
Summary:	<p>This gene is a member of a phylogenetically conserved family of genes that share a common DNA-binding domain, the T-box. T-box genes encode transcription factors involved in the regulation of developmental processes. This gene product shares 98% amino acid sequence identity with the mouse ortholog. DiGeorge syndrome (DGS)/velocardiofacial syndrome (VCFS), a common congenital disorder characterized by neural-crest-related developmental defects, has been associated with deletions of chromosome 22q11.2, where this gene has been mapped. Studies using mouse models of DiGeorge syndrome suggest a major role for this gene in the molecular etiology of DGS/VCFS. Several alternatively spliced transcript variants encoding different isoforms have been described for this gene. [provided by RefSeq, Jul 2008]</p>
Protein Families:	Transcription Factors

Product images:



Coomassie blue staining of purified TBX1 protein (Cat# TP314605). The protein was produced from HEK293T cells transfected with TBX1 cDNA clone (Cat# [RC214605]) using MegaTran 2.0 (Cat# [TT210002]).